



CERTBULL
FREEDOM TO RISE AND INSPIRE

MICROSOFT AZ-800

ADMINISTERING WINDOWS SERVER HYBRID CORE INFRASTRUCTURE

Note:

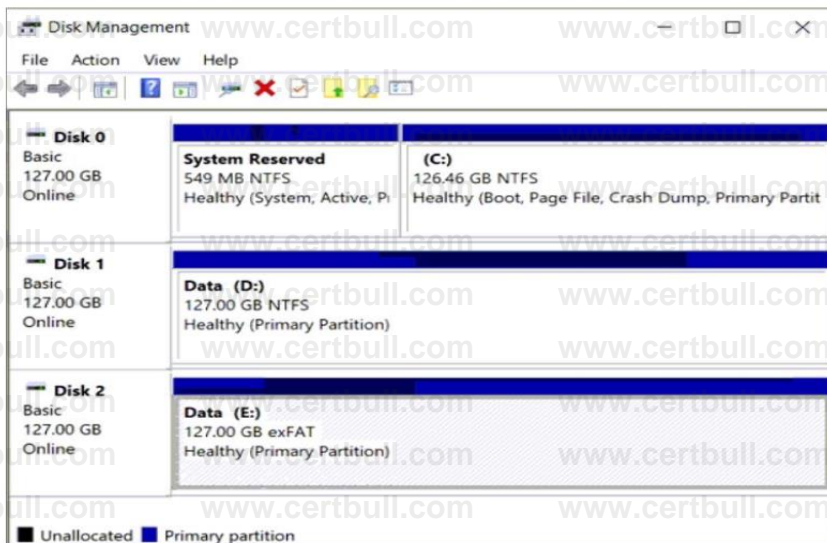
Please be aware that these free files might not be up to date. Before your exam, ensure you review our Ultra Premium File Section for the latest materials.

www.certbull.com

Warning: Keep connected with our support team
for latest updates once you are ready

QUESTION NO: 1

You have a server named Server1 that runs Windows Server. The disks on Server1 are configured as shown in the following exhibit.



You need to convert volume E to ReFS. The solution must meet the following requirements:

- The data on volume E needs to be retained.
- Minimize administrative effort.

What should you do first?

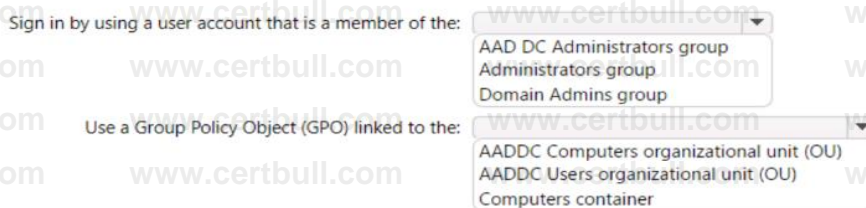
- A. Back up the data on volume E.
- B. Take Disk 2 offline.
- C. Convert Disk 2 to a dynamic disk.
- D. Run convert.exe.

QUESTION NO: 2

Your network contains an Azure Active Directory Domain Services (Azure AD DS) domain named contoso.com.

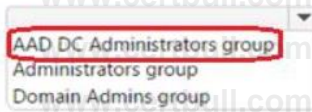
You need to configure a password policy for the local user accounts on the Azure virtual machines joined to contoso.com.

What should you do? To answer, select the appropriate options in the answer area.

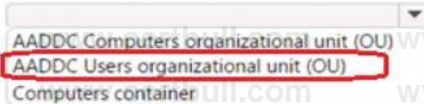


ANSWER:

Sign in by using a user account that is a member of the:



Use a Group Policy Object (GPO) linked to the:



QUESTION NO: 3

Your network contains an Active Directory forest. The forest contains two domains named contoso.com and east.contoso.com and the servers shown in the following table.

Name	Domain	Configuration
DC1	contoso.com	Domain controller
Server1	contoso.com	Member server
DC2	east.contoso.com	Domain controller
Server2	east.contoso.com	Member server

Contoso.com contains a user named User1.

You add User1 to the built-in Backup Operators group in contoso.com.

Which servers can User1 back up?

- A. DC1 only
- B. Server1 only
- C. DC1 and DC2 only
- D. DC1 and Server1 only
- E. DC1, DC2, Server1, and Server2

QUESTION NO: 4

Your network contains an Active Directory Domain Services (AD DS) forest named contoso.com. The forest root domain contains a server named server1.contoso.com. A two-way forest trust exists between the contoso.com forest and an AD DS forest named fabrikam.com. The fabrikam.com forest contains 10 child domains.

You need to ensure that only the members of a group named fabrikam\Group1 can authenticate to server1.contoso.com.

What should you do first?

- A. Add fabrikam\Group1 to the local Users group on server1.contoso.com.
- B. Enable SID filtering for the trust.

C. Enable Selective authentication for the trust.

D. Change the trust to a one-way external trust.

QUESTION NO: 5

Your network contains an Active Directory Domain Services (AD DS) forest named contoso.com. The forest contains a child domain named east.contoso.com.

In the contoso.com domain, you create two users named Admin1 and Admin2.

You need to ensure that the users can perform the following tasks:

- Admin1 can create and manage Active Directory sites.
- Admin2 can deploy domain controllers to the east.contoso.com domain.

The solution must use the principle of least privilege. To which group should you add each user? To answer, select the appropriate options in the answer area.

Admin1:

- Contoso\Administrators
- Contoso\Domain Admins
- Contoso\Enterprise Admins
- East\Administrators
- East\Domain Admins

Admin2:

- Contoso\Administrators
- Contoso\Domain Admins
- Contoso\Enterprise Admins
- East\Administrators
- East\Domain Admins

ANSWER:

Admin1:

- Contoso\Administrators
- Contoso\Domain Admins
- Contoso\Enterprise Admins
- East\Administrators
- East\Domain Admins

Admin2:

- Contoso\Administrators
- Contoso\Domain Admins
- Contoso\Enterprise Admins
- East\Administrators
- East\Domain Admins

QUESTION NO: 6

You have an on-premises Active Directory Domain Services (AD DS) domain that syncs with an Azure Active Directory (Azure AD) tenant.

You have several Windows 10 devices that are Azure AD hybrid-joined.

You need to ensure that when users sign in to the devices, they can use Windows Hello for Business.

Which optional feature should you select in Azure AD Connect?

- A. Device writeback
- B. Group writeback
- C. Azure AD app and attribute filtering
- D. Password writeback**
- E. Directory extension attribute sync

QUESTION NO: 7

You deploy a single-domain Active Directory Domain Services (AD DS) forest named contoso.com.

You deploy five servers to the domain. You add the servers to a group named ITFarmHosts.

You plan to configure a Network Load Balancing (NLB) cluster named NLBcluster.contoso.com that will contain the five servers.

You need to ensure that the NLB service on the nodes of the cluster can use a group managed service account (gMSA) to authenticate.

Which three PowerShell cmdlets should you run in sequence? To answer, move the appropriate cmdlets from the list of cmdlets to the answer area and arrange them in the correct order.

Cmdlets

- New-ADServiceAccount
- Install-ADServiceAccount
- Add-ADComputerServiceAccount
- Set-KdsConfiguration
- Add-KdsRootKey
- Add-ADGroupMember

Answer Area



ANSWER:

Cmdlets

- New-ADServiceAccount
- Install-ADServiceAccount
- Add-ADComputerServiceAccount
- Set-KdsConfiguration
- Add-KdsRootKey
- Add-ADGroupMember

Answer Area

- Add-KdsRootKey
- New-ADServiceAccount
- Install-ADServiceAccount



QUESTION NO: 8

Your network contains an on-premises Active Directory Domain Services (AD DS) domain named contoso.com. The domain contains the objects shown in the following table.

Name	Type
User1	User
Group1	Universal security group
Group2	Domain local security group
Computer1	Computer

You plan to sync contoso.com with an Azure Active Directory (Azure AD) tenant by using Azure AD Connect.

You need to ensure that all the objects can be used in Conditional Access policies.

What should you do?

- A. Select the Configure Hybrid Azure AD join option.
- B. Change the scope of Group1 and Group2 to Global.
- C. Clear the Configure device writeback option.
- D. Change the scope of Group2 to Universal.

QUESTION NO: 9

Your network contains a multi-site Active Directory Domain Services (AD DS) forest. Each Active Directory site is connected by using manually configured site links and automatically generated connections.

You need to minimize the convergence time for changes to Active Directory. What should you do?

- A. For each site link, modify the replication schedule.
- B. For each site links, modify the site link costs.
- C. Create a site link bridge that contains all the site links.
- D. For each site link, modify the options attribute.

QUESTION NO: 10

You deploy a new Active Directory Domain Services (AD DS) forest named contoso.com. The domain contains three domain controllers named DC1, DC2, and DC3.

You rename Default-First-Site-Name as Site1.

You plan to ship DC1, DC2, and DC3 to datacenters in different locations.

You need to configure replication between DC1, DC2, and DC3 to meet the following requirements:

- Each domain controller must reside in its own Active Directory site.
- The replication schedule between each site must be controlled independently.
- Interruptions to replication must be minimized.

Which three actions should you perform in sequence in the Active Directory Sites and Services console? To answer, move the appropriate actions from the list of actions to the answer area and arrange them in the correct order.

Actions

Create a connection object between DC1 and DC2.

Create an additional site link that contains Site1 and Site2.

Create two additional sites named Site2 and Site3. Move DC2 to Site2 and DC3 to Site3.

Create a connection object between DC2 and DC3.

Remove Site2 from DEFAULTIPSITELINK.

Answer Area



ANSWER:

Actions

Create an additional site link that contains Site1 and Site2.

Remove Site2 from DEFAULTIPSITELINK.

Answer Area



Create two additional sites named Site2 and Site3. Move DC2 to Site2 and DC3 to Site3.

Create a connection object between DC1 and DC2.

Create a connection object between DC2 and DC3.

QUESTION NO: 11

Your network contains an Active Directory Domain Services (AD DS) domain. The network also contains 20 domain controllers, 100 member servers, and 10,000 client computers.

You have a Group Policy Object (GPO) named GPO1 that contains Group Policy preferences. You plan to link GPO1 to the domain.

You need to ensure that the preferences in GPO1 apply only to domain member servers and NOT to domain controllers or client computers. All the other Group Policy settings in GPO1 must apply to all the computers. The solution must minimize administrative effort.

Which type of item level targeting should you use?

- A. Domain
- B. Operating System**
- C. Security Group
- D. Environment Variable

QUESTION NO: 12

You have an Active Directory Domain Services (AD DS) domain that contains the domain controllers shown in the following table.

Name	Operations master role
DC1	Schema master
DC2	Infrastructure master
DC3	Domain naming master
DC4	PDC emulator, RID master

The domain contains an app named App1 that uses a custom application partition to store configuration data. You decommission App1.

When you attempt to remove the custom application partition, the process fails.

Which domain controller is unavailable?

- A. DC1
- B. DC2
- C. DC3**
- D. DC4

QUESTION NO: 13

You have an on-premises Active Directory Domain Services (AD DS) domain that syncs with Azure AD.

You deploy an app that adds custom attributes to the domain. From Azure Cloud Shell, you discover that you cannot query the custom attributes of users.

You need to ensure that the custom attributes are available in Azure AD.

Which task should you perform from Microsoft Azure Active Directory Connect first?

- A. Configure device options
- B. Manage federation
- C. Customize synchronization options**
- D. Refresh directory schema

QUESTION NO: 14

Your network contains an Active Directory Domain Services (AD DS) domain named contoso.com.

You need to identify which server is the PDC emulator for the domain.

Solution: From Active Directory Domains and Trusts, you right-click Active Directory Domains and Trusts in the console tree, and then select Operations Master.

Does this meet the goal?

- A. Yes
- B. No**

QUESTION NO: 15

You have an on premises Active Directory Domain Services (AD DS) domain that syncs with an Azure Active Directory (Azure AD) tenant.

You plan to implement self-service password reset (SSPR) in Azure AD.

You need to ensure that users that reset their passwords by using SSPR can use the new password resources in the AD DS domain.

What should you do?

- A. Deploy the Azure AD Password Protection proxy service to the on-premises network.
- B. Run the Microsoft Azure Active Directory Connect wizard and select Password writeback.**
- C. Grant the Change password permission for the domain to the Azure AD Connect service account.
- D. Grant the impersonate a client after authentication user right to the Azure AD Connect service account.

QUESTION NO: 16

Your network contains an Active Directory Domain Services (AD DS) domain named contoso.com.

You need to identify which server is the PDC emulator for the domain.

Solution: From a command prompt, you run netdom.exe query fsmo.

Does this meet the goal?

- A. Yes**
- B. No

QUESTION NO: 17

You create a new Azure subscription.

You plan to deploy Azure Active Directory Domain Services (Azure AD DS) and Azure virtual machines.

You need to ensure that the virtual machines can join to Azure AD DS.

Which three actions should you perform in sequence? To answer, move the appropriate actions from the list of actions to the answer area and arrange them in the correct order.

Actions

Answer Area

Modify the settings of the Azure virtual network.

Install the Active Directory Domain Services role.

Install Azure AD Connect.

Create an Azure virtual network.

Create an Azure AD DS instance.

Run the Active Directory Domain Service installation Wizard.



ANSWER:

Actions

Answer Area

Modify the settings of the Azure virtual network.

Install the Active Directory Domain Services role.

Install Azure AD Connect.

Create an Azure virtual network.

Create an Azure AD DS instance.

Run the Active Directory Domain Service installation Wizard.

Create an Azure virtual network.

Create an Azure AD DS instance.

Modify the settings of the Azure virtual network.



QUESTION NO: 18

You have an Azure Active Directory Domain Services (Azure AD DS) domain named contoso.com.

You need to provide an administrator with the ability to manage Group Policy Objects (GPOs).

The solution must use the principle of least privilege.

To which group should you add the administrator?

- A. AAD DC Administrators

- B. Domain Admins
- C. Schema Admins
- D. Enterprise Admins
- E. Group Policy Creator Owners

QUESTION NO: 19

You have an Azure Active Directory Domain Services (Azure AD DS) domain. You synchronize all computer objects from Azure AD.

You create a new user named Admin1.

You need Admin1 to deploy custom Group Policy settings to all the computers in the domain.

The solution must use the principle of least privilege.

What should you include in the solution? To answer, select the appropriate options in the answer area.

Answer Area

Add Admin1 to the following group:

AAD DC Administrators
Domain Admins
Group Policy Creator Owners

Instruct Admin1 to apply the custom Group Policy settings by:

Creating a new Group Policy Object (GPO) and linking the GPO to the domain
Modifying AADDC Computers GPO
Modifying the default domain GPO

ANSWER:

Answer Area

Add Admin1 to the following group:

AAD DC Administrators
Domain Admins
Group Policy Creator Owners

Instruct Admin1 to apply the custom Group Policy settings by:

Creating a new Group Policy Object (GPO) and linking the GPO to the domain
Modifying AADDC Computers GPO
Modifying the default domain GPO

QUESTION NO: 20

Your network contains an Active Directory Domain Services (AD DS) forest named contoso.com. The root domain contains the domain controllers shown in the following table.

Name	FSMO role
DC1	Domain naming master
DC2	RID master
DC3	PDC emulator
DC4	Schema master
DC5	Infrastructure master

A failure of which domain controller will prevent you from creating application partitions?

- A. DC1
- B. DC2
- C. DC3
- D. DC4
- E. DC5

QUESTION NO: 21

You have a disaggregated cluster deployment. The deployment contains a scale-out file server (SOFS) cluster that runs Windows Server and a compute cluster that has the Hyper-V role enabled.

You need to implement Storage Quality of Service (QoS). The solution must ensure that you can control the bandwidth usage between the SOFS cluster and the Hyper-V cluster.

Which cmdlet should you run on each cluster? To answer, drag the appropriate cmdlets to the correct clusters. Each cmdlet may be used once, more than once, or not at all. You may need to drag the split bar between panes or scroll to view content.

Cmdlets

New-StorageQosPolicy

Set-VHHardDiskDrive

Set-VISan

Answer Area

SOFS:

cmdlet

Hyper-V:

cmdlet

ANSWER:

SOFS:

New-StorageQosPolicy

Hyper-V:

Set-VHHardDiskDrive

QUESTION NO: 22

You have an on-premises server named Server1 that runs Windows Server. Server1 contains a file share named Share1.

You have an Azure subscription.

You perform the following actions:

- Deploy Azure File Sync.
- Install the Azure File Sync agent on Server1.
- Register Server1 with Azure File Sync.

You need to ensure that you can add Share1 as an Azure File Sync server endpoint.

Which three actions should you perform in sequence? To answer, move the appropriate actions from the list of actions to the answer area and arrange them in the correct order.

Actions

Deploy the Azure Connected Machine agent.	
Create an Azure Storage account.	
Deploy an Azure VPN gateway.	➤
Create an Azure file share.	➤
Create a private endpoint.	
Create a sync group.	

Answer Area

	⬆
	⬆

ANSWER:

Create an Azure Storage account.
Create an Azure file share.
Create a sync group.

QUESTION NO: 23

You have an Azure subscription that contains the storage accounts shown in the following table.

Name	Location	File share	Blob container
storage1	West US	share1	None
storage2	West US	share2	container2
storage3	Central US	share3	None
storage4	Central US	share4	container4

In the West US Azure region, you create a storage sync service named SyncA.

You plan to create a sync group named GroupA.

What is the maximum number of cloud endpoints you can use with GroupA?

- A. 1
- B. 2**
- C. 3
- D. 4

QUESTION NO: 24

You have an Active Directory domain that contains a file server named Server1. Server1 runs Windows Server and includes the file shares shown in the following table.

Share Name	Path
Users	D:\Users
Accounts	D:\Dept\Accounts
Marketing	D:\Dept\Marketing
CustomerService	D:\Dept\CustomerService

When users login to the network they receive the following network drive mappings.

- H: maps to \\server1\users\%UserName%
- G: maps to \\server1\%Department%

You need to limit the amount of space consumed by user's on Server1. The solution must meet the following requirements:

- Prevent users using more than 5GB of space on their H: drive
- Prevent Accounts department users from using more than 10GB of space on the G: drive
- Prevent Marketing department users from using more than 15GB of space on the G: drive
- Prevent Customer Service department users from using more than 2GB of space on the G: drive
- Minimize administrative effort

What should you use?

- A. File Server Resource Manager (FSRM) quotas**
- B. Storage tiering
- C. NTFS Disk quotas
- D. Group Policy Preferences

QUESTION NO: 25

You have a server named Server1 that runs Windows Server and contains three volumes named C, D, and E.

Files are stored on Server1 as shown in the following table.

Name	On volume	Size
File1	C	500 KB
File2	D	10 KB
File3	D	1 MB

For volume D, Data Deduplication is enabled and set to General purpose file server. You perform the following actions:

- Move File1 to volume D.
- Copy File2 to volume D and name the copy File4.
- Move File3 to volume E.

For each of the following statements, select Yes if the statement is true. Otherwise, select No.

Statements	Yes	No
File1 is deduplicated after the deduplication job runs.	<input type="radio"/>	<input checked="" type="radio"/>
File3 is deduplicated after the deduplication job runs.	<input type="radio"/>	<input type="radio"/>
File4 is deduplicated after the deduplication job runs.	<input type="radio"/>	<input type="radio"/>

ANSWER:

Statements	Yes	No
File1 is deduplicated after the deduplication job runs.	<input checked="" type="radio"/>	<input type="radio"/>
File3 is deduplicated after the deduplication job runs.	<input type="radio"/>	<input checked="" type="radio"/>
File4 is deduplicated after the deduplication job runs.	<input checked="" type="radio"/>	<input type="radio"/>

QUESTION NO: 26

You have an Azure subscription that contains the storage accounts shown in the following table.

Name	Location	Kind	Container	File share
storage1	East US	StorageV2	cont1	share1
storage2	East US	BlockBlobStorage	cont2	Not applicable
storage3	East US	FileStorage	Not applicable	share3
storage4	Central US	StorageV2	cont4	share4

In the East US Azure region, you create a storage sync service named Sync1.

You need to create a sync group in Sync1.

Which storage accounts can you use, and what can you specify as the cloud endpoints? To answer, select the appropriate options in the answer area.

Storage accounts:

▼
storage1 only
storage1 and storage3 only
storage1 and storage4 only
storage1, storage2, and storage3 only
storage1, storage2, storage3, and storage4

Cloud endpoints:

▼
cont1 and cont2 only
share1 and share3 only
cont1, cont2, and cont4 only
share1, share3, and share4 only
cont1, cont2, share1, and share3 only
cont1, cont2, cont4, share1, share3, and share4

ANSWER:

Storage accounts:

▼
storage1 only
storage1 and storage3 only
storage1 and storage4 only
storage1, storage2, and storage3 only
storage1, storage2, storage3, and storage4

Cloud endpoints:

▼
cont1 and cont2 only
share1 and share3 only
cont1, cont2, and cont4 only
share1, share3, and share4 only
cont1, cont2, share1, and share3 only
cont1, cont2, cont4, share1, share3, and share4

QUESTION NO: 27

You have a server named Server1 that runs Windows Server and contains two drives named C and D. Server1 hosts multiple file shares.

You enable Data Deduplication on drive D and select the General purpose file server workload.

You need to minimize the space consumed by files that were recently modified or deleted.

What should you do?

- A. Run the Set-DedupVolume cmdlet and configure the Scrubbing job.
- B. Run the Set-DedupSchedule cmdlet and configure a GarbageCollection job.**
- C. Run the Set-DedupVolume cmdlet and configure the InputOutputScale settings.
- D. Run the Set-DedupSchedule cmdlet and configure the Optimization job.

QUESTION NO: 28

Your company has a main office and 10 branch offices that are connected by using WAN links.

The network contains an Active Directory domain.

All users have laptops and regularly travel between offices.

You plan to implement BranchCache in the branch offices.

In each branch office, you install a server that runs Windows Server and the BranchCache feature. You register the servers in Active Directory.

You need to configure the laptops to use the local BranchCache server automatically. The solution must minimize administrative effort.

Which two Group Policy settings should you configure? To answer, select the settings in the answer area.

Setting	State
Turn on BranchCache	Not configured
Set BranchCache Distributed Cache mode	Not configured
Set BranchCache Hosted Cache mode	Not configured
Enable Automatic Hosted Cache Discovery by Service Connection...	Not configured
Configure Hosted Cache Servers	Not configured
Configure BranchCache for network files	Not configured
Set percentage of disk space used for client computer cache	Not configured
Set age for segments in the data cache	Not configured
Configure Client BranchCache Version Support	Not configured

ANSWER:

Setting	State
Turn on BranchCache	Not configured
Set BranchCache Distributed Cache mode	Not configured
Set BranchCache Hosted Cache mode	Not configured
Enable Automatic Hosted Cache Discovery by Service Connection...	Not configured
Configure Hosted Cache Servers	Not configured
Configure BranchCache for network files	Not configured
Set percentage of disk space used for client computer cache	Not configured
Set age for segments in the data cache	Not configured
Configure Client BranchCache Version Support	Not configured

QUESTION NO: 29

Your network contains an Active Directory Domain Services (AD DS) domain named contoso.com.

The network contains the servers shown in the following table.

Name	Role	Domain/workgroup	Operating system
DC1	Active Directory Domain Services, DNS Server	contoso.com	Windows Server
Server1	DHCP Server	contoso.com	Windows Server
Server2	None	contoso.com	Windows Server Core
Server3	None	Workgroup1	Windows Server Core

You plan to implement IP Address Management (IPAM). You need to use the Group Policy based provisioning method for managed servers. The solution must support server discovery.

What should you do? To answer, select the appropriate options in the answer area.

Server on which to deploy the IPAM server role

▼
DC1
Server1
Server2
Server3

Servers that must be provisioned for IPAM

▼
DC1 and Server1
DC1 and Server3
Server1 and Server2
Server2 and Server3

ANSWER:

Server on which to deploy the IPAM server role

▼
DC1
Server1
Server2
Server3

Servers that must be provisioned for IPAM

▼
DC1 and Server1
DC1 and Server3
Server1 and Server2
Server2 and Server3

QUESTION NO: 30

Your network contains an Active Directory Domain Services (AD DS) forest. The forest contains three domains. Each domain contains 10 domain controllers.

You plan to store a DNS zone in a custom Active Directory partition.

You need to create the Active Directory partition for the zone. The partition must replicate to only four of the domain controllers.

What should you use?

- A. dnscmd.exe
- B. Active Directory Sites and Services
- C. Set-DnsServer
- D. DNS Manager

QUESTION NO: 31

Your network contains an Active Directory Domain Services (AD DS) forest. The forest contains three Active Directory sites named Site1, Site2, and Site3. Each site contains two domain controllers. The sites are connected by using DEFAULTIPSITELINK.

You open a new branch office that contains only client computers.

You need to ensure that the client computers in the new office are primarily authenticated by the domain controllers in Site1.

Solution: You create a new subnet object that is associated to Site1.

Does this meet the goal?

A. Yes

B. No

QUESTION NO: 32

You have an on-premises DNS server named Server1 that runs Windows Server. Server1 hosts a DNS zone named fabnkam.com.

You have an Azure subscription that contains the resources shown in the following table.

Name	Type	Description
Vnet1	Virtual network	Connects to the on-premises network by using a Site-to-Site VPN
VM1	Virtual machine	Runs Windows Server and has the DNS Server role installed
contoso.com	Private DNS zone	Linked to Vnet1
contoso.com	Public DNS zone	Contains the DNS records of all the platform as a service (PaaS) resources

You need to design a solution that will automatically resolve the names of any PaaS resources for which you configure private endpoints in Vnet1.

How should you configure the name resolution? To answer, select the appropriate options in the answer area.

On Vnet1

- Configure VM1 to forward requests for the contoso.com zone to the public DNS zone
- Configure Vnet1 to use a custom DNS server that is set to the Azure-provided DNS at 168.63.129.16
- Configure VM1 to forward requests for the contoso.com zone to the Azure-provided DNS at 168.63.129.16

On the on-premises network

- Configure forwarding for the contoso.com zone to VM1
- Configure forwarding for the contoso.com zone to the public DNS zone
- Configure forwarding for the contoso.com zone to the Azure-provided DNS at 168.63.129.16

ANSWER:

On Vnet1

- Configure VM1 to forward requests for the contoso.com zone to the public DNS zone
- Configure Vnet1 to use a custom DNS server that is set to the Azure-provided DNS at 168.63.129.16
- Configure VM1 to forward requests for the contoso.com zone to the Azure-provided DNS at 168.63.129.16

On the on-premises network

- Configure forwarding for the contoso.com zone to VM1
- Configure forwarding for the contoso.com zone to the public DNS zone
- Configure forwarding for the contoso.com zone to the Azure-provided DNS at 168.63.129.16

QUESTION NO: 33

Your network contains a two-domain on-premises Active Directory Domain Services (AD DS) forest named contoso.com. The forest contains the domain controllers shown in the following table.

Name	Description	Domain	Active Directory site
DC1	Forest-wide and domain-wide FSMO role holder	contoso.com	Hub
DC2	Domain-wide FSMO role holder	child.contoso.com	Site1
RODC3	Read-only domain controller (RODC)	contoso.com	Site2

All domain controllers are backed up by using Azure Backup.

You create an Active Directory site named Site3. Site1, Site2, and Site3 each has a dedicated site link to the Hub site.

In Site3, you install a new server named Server1.

You need to promote Server1 to an RODC in child.contoso.com by using the Install from Media (IFM) option. The solution must minimize network traffic.

What should you do? To answer, select the appropriate options in the answer area.

Server to use to create the IFM source

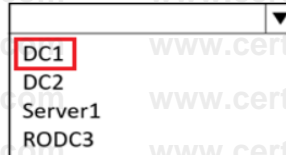
- DC1
- DC2
- Server1
- RODC3

Tool to use to create the IFM source

- Azure Backup
- Dcdiag.exe
- Ntdsutil.exe
- Repadmin.exe
- Windows Server Backup

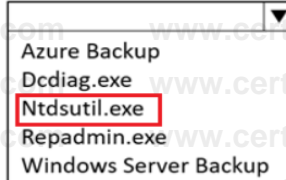
ANSWER:

Server to use to create the IFM source



A screenshot of a dropdown menu. The menu is open, showing a list of server names: DC1, DC2, Server1, and RODC3. The 'DC1' option is highlighted with a red rectangular box.

Tool to use to create the IFM source



A screenshot of a dropdown menu. The menu is open, showing a list of tools: Azure Backup, Dcdiag.exe, Ntdsutil.exe, Repadmin.exe, and Windows Server Backup. The 'Ntdsutil.exe' option is highlighted with a red rectangular box.

QUESTION NO: 34

You have an on-premises Active Directory Domain Services (AD DS) domain that syncs with an Azure Active Directory (Azure AD) tenant. Group writeback is enabled in Azure AD Connect.

The AD DS domain contains a server named Server1. Server1 contains a shared folder named share1.

You have an Azure Storage account named storage2 that uses Azure AD-based access control. The storage2 account contains a share named share2.

You need to create a security group that meets the following requirements:

- Can contain users from the AD DS domain
- Can be used to authorize user access to share1 and share2

What should you do?

- A. In the Azure AD tenant, create a security group that has assigned membership.
- B. In the AD DS domain, create a universal security group.**
- C. In the Azure AD tenant, create a security group that has dynamic membership.
- D. In the Azure AD tenant, create a Microsoft 365 group.

QUESTION NO: 35

You have a Group Policy Object (GPO) named GPO1 that contains user settings only.

You plan to apply GPO1 to a global security group named Group1.

You link GPO1 to the domain, and you remove all the permissions granted to the Authenticated Users group.

You need to configure permissions for GPO1 to meet the following requirements:

- GPO1 must apply only to the users in Group1.
- The solution must use the principle of least privilege.

Which permissions should you grant to Group1 and the Domain Computers group?

To answer, select the appropriate options in the answer area.

Group1	▼
Apply group policy and Read	
Apply group policy only	
Read only	

Domain Computers	▼
Apply group policy and Read	
Apply group policy only	
Read only	

ANSWER:

Group1	▼
Apply group policy and Read	
Apply group policy only	
Read only	

Domain Computers	▼
Apply group policy and Read	
Apply group policy only	
Read only	

QUESTION NO: 36

You have a server named Server1 that runs Windows Server. Server1 has a just-a-bunch-of-disks (JBOD) enclosure attached.

You plan to create a storage pool on Server1 and a virtual disk that will use a mirror layout.

You are considering whether to use a two-way or a three-way mirror layout.

What is the minimum number of disks required for each type of mirror layout? To answer, select the appropriate options in the answer area.

Two-way mirror	▼
1	
2	
3	
4	
5	
6	

Three-way mirror	▼
1	
2	
3	
4	
5	
6	

ANSWER:

Two-way mirror

▼

1
2
3
4
5
6

Three-way mirror

▼

1
2
3
4
5
6

QUESTION NO: 37

Your company has offices in Boston and Montreal. The offices are connected by using a 10-Mbps WAN link that is often saturated.

The office in Boston contains the following:

- An Active Directory Domain Services (AD DS) domain controller named DC1
- A server named Server1 that runs Windows Server and has the File Server role installed

The office in Montreal contains 20 client computers that run Windows 10. Montreal does NOT have any servers.

The company plans to deploy a new line-of-business (LOB) application to all the client computers. The installation source files for the application are in \\Server1\Apps.

You need to make the installation source files available to the client computers in the Montreal office by using the minimum amount of WAN bandwidth possible. What should you do? To answer, select the appropriate options in the answer area.

Answer Area

On Server1

▼

Enable BranchCache in hosted cache mode
Enable BranchCache in Distributed cache mode
Install the BranchCache for network files role service

On the client computers

▼

Enable BranchCache in hosted cache mode
Enable BranchCache in Distributed cache mode
Install the BranchCache for network files role service

ANSWER:

On Server1

- Enable BranchCache in hosted cache mode
- Enable BranchCache in Distributed cache mode
- Install the BranchCache for network files role service**

On the client computers

- Enable BranchCache in hosted cache mode
- Enable BranchCache in Distributed cache mode**
- Install the BranchCache for network files role service

QUESTION NO: 38

You have a server named Server1 that runs Windows Server.

You plan to host applications in Windows containers.

You need to configure Server1 to run containers.

What should you install?

- A. Windows Admin Center
- B. Docker**
- C. the Windows Subsystem for Linux
- D. Hyper-V

QUESTION NO: 39

You have two servers that have the Hyper-V server role installed. The servers are joined to a failover cluster. Both servers can connect to the same disk on an iSCSI storage device.

You plan to use the iSCSI storage to store highly available Hyper-V virtual machines that will support live migration functionally.

You need to configure a storage resource in the failover cluster to store the virtual machines.

What should you configure?

- A. Cluster Shared Volumes (CSV)**
- B. Distributed File System (DFS) Replication
- C. a storage pool
- D. a mirrored volume

QUESTION NO: 40

You have a server named Server1 that runs Windows Server. Server1 has the storage pools shown in the following table.

Name	Number of 7,200-RPM HDDs	Number of 10,000-RPM HDDs	Number of SSDs
Pool1	4	4	None
Pool2	None	2	2
Pool3	8	None	4

You plan to create a virtual disk named VDisk1 that will use storage tiers.

Which pools can you use to create VDisk1?

- A. Pool2 only
- B. Pool1 only
- C. Pool1, Pool2, and Pool3
- D. Pool1 and Pool2 only
- E. Pool3 only
- F. Pool2 and Pool3 only**
- G. Pool1 and Pool3 only

QUESTION NO: 41

Your network contains an Active Directory Domain Services (AD DS) domain named contoso.com. The domain contains a server named Server1 that has the DFS Namespaces role service installed. Server1 hosts a domain-based Distributed File System (DFS) Namespace named Files. The domain contains a file server named Server2. Server2 contains a shared folder named Share1. Share1 contains a subfolder named Folder1.

In the Files namespace, you create a folder named Folder1 that has a target of \\Server2.contoso.com\Share1\Folder1.

You need to configure a logon script that will map drive letter M to Folder1. The solution must use the path of the DFS Namespace.

How should you configure the command to map the drive letter? To answer, select the appropriate options in the answer area.

net use m: [dropdown] [dropdown]

<ul style="list-style-type: none"> \\contoso.com \\files.contoso.com \\Server1.contoso.com \\Server2.contoso.com 	<ul style="list-style-type: none"> files\folder1 files\share1\folder1 folder1 share1\folder1
--	--

ANSWER:

net use m: [dropdown] [dropdown]

<ul style="list-style-type: none"> \\contoso.com \\files.contoso.com \\Server1.contoso.com \\Server2.contoso.com 	<ul style="list-style-type: none"> files\folder1 files\share1\folder1 folder1 share1\folder1
---	---

QUESTION NO: 42

You have two on-premises servers named Server1 and Server2 that run Windows Server.

You have an Azure Storage account named storage1 that contains a file share named share1.

Server1 syncs with share1 by using Azure File Sync.

You need to configure Server2 to sync with share1.

Which three actions should you perform in sequence? To answer, move the appropriate actions from the list of actions to the answer area and arrange them in the correct order.

Drag and drop actions to the answer area:

- Add a server endpoint to the sync group.
- Register Server2 with the Storage Sync Service.
- Add a Storage Sync Service to the Azure Subscription.
- On Server2, install the Azure File Sync agent.
- Add a cloud endpoint to the sync group.

Answer area with arrows:

- Left arrow
- Right arrow
- Up arrow
- Down arrow

ANSWER:

Drag and drop actions to the answer area:

- Add a server endpoint to the sync group.
- Register Server2 with the Storage Sync Service.
- Add a Storage Sync Service to the Azure Subscription.
- On Server2, install the Azure File Sync agent.
- Add a cloud endpoint to the sync group.
- On Server2, install the Azure File Sync agent.
- Register Server2 with the Storage Sync Service.
- Add a server endpoint to the sync group.

Answer area with arrows:

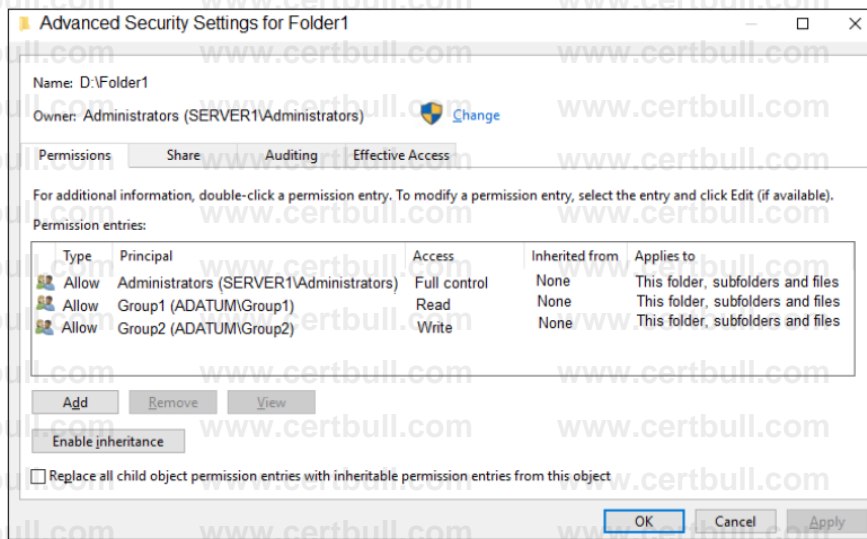
- Left arrow
- Right arrow
- Up arrow
- Down arrow

QUESTION NO: 43

Your network contains an Active Directory Domain Services (AD DS) domain named adatum.com. The domain contains a server named Server1 and the users shown in the following table.

Name	Member of
User1	Group1
User2	Group2
User3	Group3

Server1 contains a folder named D:\Folder1. The advanced security settings for Folder1 are configured as shown in the Permissions exhibit. (Click the Permissions tab.)



Folder1 is shared by using the following configurations:

```

Path                : D:\Folder1
Name                 : Share1
ShareType            : FileSystemDirectory
FolderEnumerationMode : Unrestricted
  
```

The share permissions for Share1 are shown in the following table.

Group	Permission
Group1	Allow – Change
Group3	Allow – Full Control

For each of the following statements, select Yes if the statement is true. Otherwise, select No.

Statements

Yes

No

User1 can read the files in Share1.

User3 can delete files in Share1.

If User2 connects to \\Server1.adatum.com from File Explorer, Share1 will be listed.

ANSWER:

Statements

Yes

No

User1 can read the files in Share1.

User3 can delete files in Share1.

If User2 connects to \\Server1.adatum.com from File Explorer, Share1 will be listed.

QUESTION NO: 44

You have a server named Server1.

You plan to use Storage Spaces to expand the storage available to Server1. You attach eight physical disks to Server1. Four disks are HDDs and four are SSDs.

You need to create a volume on Server1 that will use the storage on all the new disks. The solution must provide the fastest read performance for frequently used files.

Which three actions should you perform in sequence? To answer, move the appropriate actions from the list of actions to the answer area and arrange them in the correct order.

- Create a virtual disk.
- Convert each new disk into a dynamic disk.
- Create a storage pool.
- Create a spanned volume.
- Convert each new disk into a GPT disk.
- Create a simple volume



ANSWER:

- Convert each new disk into a dynamic disk.
- Create a storage pool.
- Create a virtual disk.
- Create a simple volume
- Create a spanned volume.
- Convert each new disk into a GPT disk.



QUESTION NO: 45

You have five file servers that run Windows Server.

You need to block users from uploading video files that have the .mov extension to shared folders on the file servers. All other types of files must be allowed. The solution must minimize administrative effort.

What should you create?

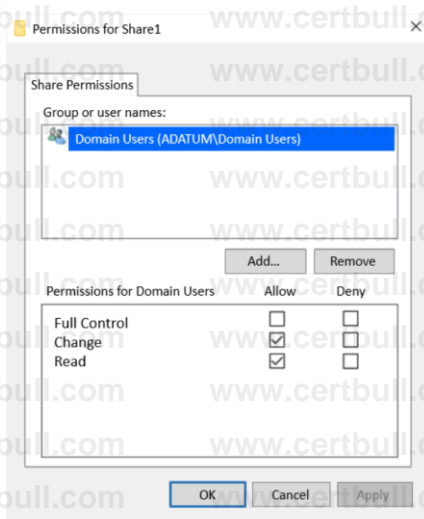
- A. a Dynamic Access Control central access policy
- B. a data loss prevention (DLP) policy
- C. a Dynamic Access Control central access rule
- D. a file screen**

QUESTION NO: 46

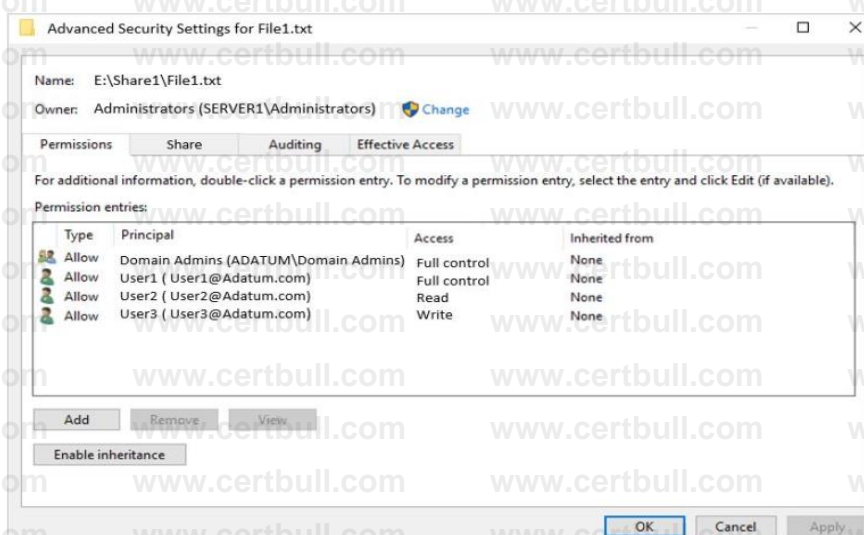
Your network contains an Active Directory Domain Services (AD DS) domain named adatum.com. The domain contains a file server named Server1 and three users named User1, User2, and User3. Server1 contains a shared folder named Share1 that has the following configurations:

```
ShareState           : Online
AvailabilityType     : NonClustered
FolderEnumerationMode : AccessBased
CachingMode         : Manual
LeasingMode         : Full
SmbInstance         : Default
CompressData        : False
ContinuouslyAvailable : False
EncryptData         : False
Name                : Share1
Path                : E:\Share1
ShadowCopy          : False
```

The share permissions for Share1 are configured as shown in the Share Permissions exhibit.



Share1 contains a file named File1.txt. The advanced security settings for File1.txt are configured as shown in the File Permissions exhibit.



For each of the following statements, select Yes if the statement is true. Otherwise, select No.

Statements	Yes	No
When User1 connects to \\Server1.adatum.com\Share1, the user can take ownership of File1.txt.	<input type="radio"/>	<input type="radio"/>
When User2 connects to \\Server1.adatum.com\Share1, File1.txt is visible.	<input type="radio"/>	<input type="radio"/>
When User3 connects to \\Server1.adatum.com\Share1, File1.txt is visible.	<input type="radio"/>	<input type="radio"/>

ANSWER:

Statements	Yes	No
When User1 connects to \\Server1.adatum.com\Share1, the user can take ownership of File1.txt.	<input type="radio"/>	<input checked="" type="checkbox"/>
When User2 connects to \\Server1.adatum.com\Share1, File1.txt is visible.	<input checked="" type="checkbox"/>	<input type="radio"/>
When User3 connects to \\Server1.adatum.com\Share1, File1.txt is visible.	<input checked="" type="checkbox"/>	<input type="radio"/>

QUESTION NO: 47

Your network contains an Active Directory Domain Services (AD DS) domain named contoso.com. The domain contains two servers named Server1 and Server2.

Server1 contains a disk named Disk2. Disk2 contains a folder named UserData. UserData is shared to the Domain Users group. Disk2 is configured for deduplication. Server1 is protected by using Azure Backup. Server1 fails.

You connect Disk2 to Server2.

You need to ensure that you can access all the files on Disk2 as quickly as possible. What should you do?

- A. Create a storage pool.
- B. Restore files from Azure Backup.
- C. Install the File Server Resource Manager server role.
- D. Install the Data Deduplication server role.**

QUESTION NO: 48

You have a file server named Server1 that runs Windows Server and contains the volumes shown in the following table.

Name	File system
C	NTFS
D	NTFS
E	REFS

On which volumes can you use BitLocker Drive Encryption (BitLocker) and disk quotas? To answer, select the appropriate options in the answer area.

BitLocker:

C only
D only
C and D only
D and E only
C, D, and E

Disk quotas:

C only
D only
C and D only
D and E only
C, D, and E

ANSWER:

BitLocker:

C only
D only
C and D only
D and E only
C, D, and E

Disk quotas:

C only
D only
C and D only
D and E only
C, D, and E

QUESTION NO: 49

You have a server that runs Windows Server and contains a shared folder named UserData.

You need to limit the amount of storage space that each user can consume in UserData.

What should you use?

- A. Storage Spaces
- B. Work Folders
- C. Distributed File System (DFS) Namespaces
- D. File Server Resource Manager (FSRM)**

QUESTION NO: 50

You need to sync files from an on-premises server named Server1 to Azure by using Azure File Sync.

You have a cloud tiering policy that is configured for 30 percent free space and 70 days. Volume E on Server1 has a size of 500 GB.

A year ago, you configured E:\Data on Server1 to sync by using Azure File Sync. The files that are visible in E:\Data are shown in the following table.

Name	Size	Last accessed
File1	200 GB	2 days ago
File2	100 GB	10 days ago
File3	200 GB	60 days ago
File4	50 GB	100 days ago

Volume E does NOT contain any other files.

Where are File1 and File3 located? To answer, select the appropriate options in the answer area.

File1:

Server1 only
The Azure file share only
Server1 and the Azure file share

File3:

Server1 only
The Azure file share only
Server1 and the Azure file share

ANSWER:

File1:

Server1 only
The Azure file share only
Server1 and the Azure file share

File3:

Server1 only
The Azure file share only
Server1 and the Azure file share

QUESTION NO: 51

You have on-premises servers that run Windows Server as shown in the following table.

Name	Local content
Server1	D:\Folder1\File1.docx
Server2	D:\Data1\File3.docx

You have an Azure file share named share1 that stores two files named File2.docx and File3.docx.

You create an Azure File Sync sync group that includes the following endpoints:

- share1
- D:\Folder1 on Server1
- D:\Data1 on Server2

For each of the following statements, select Yes if the statement is true. Otherwise, select No.

Statements	Yes	No
You can create a file named File2.docx in D:\Folder1 on Server1.	<input type="radio"/>	<input type="radio"/>
You can create a file named File1.docx in D:\Data1 on Server2.	<input type="radio"/>	<input type="radio"/>
File3.docx will sync to Server1.	<input type="radio"/>	<input type="radio"/>

ANSWER:

Statements	Yes	No
You can create a file named File2.docx in D:\Folder1 on Server1.	<input checked="" type="radio"/>	<input type="radio"/>
You can create a file named File1.docx in D:\Data1 on Server2.	<input checked="" type="radio"/>	<input type="radio"/>
File3.docx will sync to Server1.	<input type="radio"/>	<input checked="" type="radio"/>

QUESTION NO: 52

Your network contains an Active Directory Domain Services (AD DS) domain. The domain contains the offices shown in the following table.

Location	Number of VPN servers	Number of remote users
Boston	2	30
Dallas	2	50
Seattle	4	100

You need to deploy a Network Policy Server (NPS) named NPS1 to enforce network access policies for all remote connections.

What is the minimum number of RADIUS clients that you should add to NPS1?

- A. 1
- B. 3
- C. 8
- D. 180
- E. 188

QUESTION NO: 53

Case Study

This is a case study. Case studies are not timed separately. You can use as much exam time as you would like to complete each case. However, there may be additional case studies and sections on this exam. You must manage your time to ensure that you are able to complete all questions included on this exam in the time provided.

To answer the questions included in a case study, you will need to reference information that is provided in the case study. Case studies might contain exhibits and other resources that provide more information about the scenario that is described in the case study. Each question is independent of the other questions in this case study.

At the end of this case study, a review screen will appear. This screen allows you to review your answers and to make changes before you move to the next section of the exam. After you begin a new section, you cannot return to this section.

To start the case study

To display the first question in this case study, click the Next button. Use the buttons in the left pane to explore the content of the case study before you answer the questions. Clicking these buttons displays information such as business requirements, existing environment, and problem statements. If the case study has an All-Information tab, note that the information displayed is identical to the information displayed on the subsequent tabs. When you are ready to answer a question, click the Question button to return to the question.

Overview

Company Information

ADatum Corporation is a manufacturing company that has a main office in Seattle and two branch offices in Los Angeles and Montreal.

Fabrikam Partnership

ADatum recently partnered with 2 company named Fabrikam, Inc.

Fabrikam is a manufacturing company that has a main office in Boston and a branch office in Orlando.

Both companies intend to collaborate on several joint projects.

Existing Environment

ADatum AD DS Environment

The on-premises network of ADatum contains an Active Directory Domain Services (AD DS) forest named adatum.com.

The forest contains two domains named adatum.com and east.adatum.com and the domain controllers shown in the following table.

Name	Domain	Operations master roles
DC1	adatum.com	Schema master
DC2	adatum.com	None
DC3	east.adatum.com	PDC emulator, RID master

Fabrikam AD DS Environment

The on-premises network of Fabrikam contains an AD DS forest named fabrikam.com.

The forest contains two domains named fabrikam.com and south.fabrikam.com.

The fabrikam.com domain contains an organizational unit (OU) named Marketing.

Server Infrastructure

The adatum.com domain contains the servers shown in the following table.

Name	Role
HyperV1	Hyper-V
SSPace1	File and Storage Services

HyperV1 contains the virtual machines shown in the following table.

Name	Operating system	Description
VM1	Windows Server 2022 Datacenter	Joined to the adatum.com domain Contains a file share named Data1 and a local user named User1
VM2	Red Hat Enterprise Linux (RHEL)	Contains a local user named User2
VM3	Windows Server 2022 Standard	Joined to the adatum.com domain Has the File and Storage Services role installed

All the virtual machines on HyperV1 have only the default management tools installed.

SSPace1 contains the Storage Spaces virtual disks shown in the following table.

Name	Number of physical disks	Redundancy
Disk1	8	Three-way mirror
Disk2	12	Parity

Azure Resources

ADatum has an Azure subscription that contains an Azure AD tenant. Azure AD Connect is configured to sync the adatum.com forest with Azure AD.

The subscription contains the virtual networks shown in the following table.

Name	Location	Subnet
VNet1	West US	Subnet1, Subnet2
VNet2	West US	SubnetA, SubnetB

The subscription contains the Azure Private DNS zones shown in the following table.

Name	Virtual network link
Zone1.com	VNet1
Zone2.com	VNet2
Zone3.com	None

The subscription contains the virtual machines shown in the following table.

Name	Operating system	Security type
Server1	Windows Server 2022 Datacenter: Azure Edition	Trusted launch
Server2	Windows Server 2022 Datacenter: Azure Edition	Standard
Server3	Windows Server 2022 Datacenter	Standard
Server4	Windows Server 2019 Datacenter	Trusted launch

All the servers are in a workgroup.

The subscription contains a storage account named storage1 that has a file share named share1.

Requirements

Planned Changes

ADatum plans to implement the following changes:

- Sync Data1 to share1.
- Configure an Azure runbook named Task1.
- Enable Azure AD users to sign in to Server1.
- Create an Azure DNS Private Resolver that has the following configurations:
 - Name: Private1
 - Region: West US
 - Virtual network: VNet1
 - Inbound endpoint: SubnetB
- Enable users in the adatum.com domain to access the resources in the south.fabrikam.com domain.

Technical Requirements

ADatum identifies the following technical requirements:

- The data on SSPace1 must be available always.
- DC2 must become the schema master if DC1 fails.
- VM3 must be configured to enable per-folder quotas.
- Trusts must allow access to only the required resources.
- The users in the Marketing OU must have access to storage1.
- Azure Automanage must be used on all supported Azure virtual machines.
- A direct SSH session must be used to manage all the supported virtual machines on HyperV1.

You need to ensure that VM3 meets the technical requirements.

What should you install first?

- A. Enhanced Storage
- B. the iSNS Server service
- C. File Server Resource Manager (FSRM)**
- D. Windows Standards-Based Storage Management

QUESTION NO: 54

REFER THE ABOVE CASE STUDY

You need to ensure that data availability on SSPace1 meets the technical requirements.

What is the maximum number of physical disks that can fail on each disk? To answer, select the appropriate options in the answer area.

Disk1:

Disk2:

ANSWER:

Disk1:

Disk2:

QUESTION NO: 55

REFER THE ABOVE CASE STUDY

You need to implement the planned change for Data1.

Which actions should you perform in sequence? To answer, drag the appropriate actions to the correct order. Each action may be used once, more than once, or not at all. You may need to drag the split bar between panes or scroll to view content.

Actions

- Add a server endpoint.
- Create a sync group.
- Deploy the Azure Storage Sync service.
- Install the DFS Replication role service.
- Install the Storage Replica feature.

Answer Area

- Step 1: Action
- Step 2: Install and register the Azure File Sync agent.
- Step 3: Action
- Step 4: Action

ANSWER:

- Step 1: Deploy the Azure Storage Sync service.
- Step 2: Install and register the Azure File Sync agent.
- Step 3: Create a sync group.
- Step 4: Add a server endpoint.

QUESTION NO: 56

REFER THE ABOVE CASE STUDY

You need to meet technical requirements for HyperV1.

Which command should you run? To answer, select the appropriate options in the answer area.

ssh

Connect-PSSession Connect-WSMan hvc.exe mstsc.exe	User1@VM1 User1@VM2 User2@VM2 VM1
--	--

ANSWER:

ssh

Connect-PSSession Connect-WSMan hvc.exe mstsc.exe	User1@VM1 User1@VM2 User2@VM2 VM1
---	---

QUESTION NO: 57

REFER THE ABOVE CASE STUDY

You need to ensure that Automanage meets the technical requirements.

On which Azure virtual machines should you enable Automanage?

- A. Server1 only
- B. Server2 only
- C. Server1 and Server2 only
- D. Server2 and Server3 only**
- E. Server1 and Server4 only

QUESTION NO: 58

REFER THE ABOVE CASE STUDY

Which two languages can you use for Task1? Each correct answer presents a complete solution.

- A. Bicep
- B. Python**
- C. Java
- D. PowerShell**
- E. JavaScript

QUESTION NO: 59

REFER THE ABOVE CASE STUDY

You need to implement the planned changes for Azure AD users to sign in to Server1.

Which PowerShell cmdlet should you run?

- A. New-ADComputer
- B. Set-AzVM
- C. Set-AzVMExtension**
- D. Add-ADComputerServiceAccount

QUESTION NO: 60

REFER THE ABOVE CASE STUDY

You need to meet the technical requirements for the schema master. You run ntdsutil.exe.

Which five commands should you run in sequence? To answer, move the appropriate commands from the list of commands to the answer area and arrange them in the correct order?

Commands

```

seize schema master
connect
connect to server dc2.adatum.com
roles
quit
metadata cleanup

```



Answer Area



ANSWER:

```

roles
connect
connect to server dc2.adatum.com
quit
seize schema master

```

QUESTION NO: 61

REFER THE ABOVE CASESTUDY

You need to implement the planned changes for the Azure DNS Private Resolver.

Which private DNS zones can you use for name resolution?

- A. Zone1.com only
- B. Zone2.com only
- C. Zone1.com and Zone2.com only
- D. Zone2.com and Zone3.com only
- E. Zone1.com, Zone2.com, and Zone3.com

QUESTION NO: 62

You have on-premises file servers that run Windows Server as shown in the following table.

Name	Relevant folder
Server1	D:\Folder1, E:\Folder2
Server2	D:\Data

You have the Azure file shares shown in the following table.

Name	Location
share1	East US
share2	East US

You add a Storage Sync Service named Sync1 and an Azure File Sync sync group named Group1. Group1 uses share1 as a cloud endpoint.

You register Server1 and Server2 with Sync1. You add D:\Folder1 from Server1 as a server endpoint in Group1.

For each of the following statements, select Yes if the statement is true. Otherwise, select No.

Statements

Yes

No

You can add share2 as a cloud endpoint in Group1.

You can add E:\Folder2 from Server1 as a server endpoint in Group1.

You can add D:\Data from Server2 as a server endpoint in Group1.

ANSWER:

Statements

Yes

No

You can add share2 as a cloud endpoint in Group1.

You can add E:\Folder2 from Server1 as a server endpoint in Group1.

You can add D:\Data from Server2 as a server endpoint in Group1.

QUESTION NO: 63

Your network contains an Active Directory Domain Services (AD DS) forest. The forest contains three domains. Each domain contains 10 domain controllers.

You plan to store a DNS zone in a custom Active Directory partition.

You need to create the Active Directory partition for the zone. The partition must replicate to only four of the domain controllers.

What should you use?

- A. Active Directory Administrative Center
- B. Set-DnsServer
- C. New-ADObject
- D. ntdsutil.exe

QUESTION NO: 64

Your network contains an Active Directory Domain Services (AD DS) domain. The domain contains a user named User1 and the servers shown in the following table

Name	Server role	DHCP scope
Server1	DHCP Server	Scope1, Scope2
Server2	DHCP Server	Scope3, Scope4

You need to ensure that User1 can manage only Scope1 and Scope3.

What should you do?

- A. Add User1 to the DHCP Administrators group on Server1 and Server2.
- B. Implement IP Address Management (IPAM).**
- C. Add User1 to the DHCP Administrators domain local group.
- D. Implement Windows Admin Center and add connections to Server1 and Server2

QUESTION NO: 65

Your network contains an Active Directory Domain Services (AD DS) domain. The domain contains 10 servers that run Windows Server. The servers have static IPv4 addresses.

You plan to use DHCP to assign IPv4 addresses to the servers.

You need to ensure that each server always receives the same IPv4 address.

Which type of identifier should you use to create a DHCP reservation for each server?

- A. fully qualified domain name (FQDN)
- B. universally unique identifier (UUID)
- C. NetBIOS name
- D. MAC address**

QUESTION NO: 66

Case Study

This is a case study. Case studies are not timed separately. You can use as much exam time as you would like to complete each case. However, there may be additional case studies and sections on this exam. You must manage your time to ensure that you are able to complete all questions included on this exam in the time provided.

To answer the questions included in a case study, you will need to reference information that is provided in the case study. Case studies might contain exhibits and other resources that provide more information about the scenario that is described in the case study. Each question is independent of the other questions in this case study. At the end of this case study, a review screen will appear. This screen allows you to review your answers and to make changes before you move

to the next section of the exam. After you begin a new section, you cannot return to this section.

To start the case study

To display the first question in this case study, click the Next button. Use the buttons in the left pane to explore the content of the case study before you answer the questions. Clicking these buttons displays information such as business requirements, existing environment, and problem statements. If the case study has an All-Information tab, note that the information displayed is identical to the information displayed on the subsequent tabs. When you are ready to answer a question, click the Question button to return to the question.

Overview

Fabrikam, Inc is a manufacturing company that has a main office in New York and a branch office in Seattle.

Existing Environment

On-premises Servers

The on-premises network contains servers that run Windows Server as shown in the following table.

Name	Configuration	Office
AADC1	Azure AD Connect	New York
APP1	Application Server	New York
APP2	Application Server	Seattle
DC1	Domain Controller	New York
DC2	Domain Controller	Seattle
DHCP1	DHCP server	New York
DHCP2	DHCP server	Seattle
FS1	File server	New York
FS2	File server	Seattle
VM1	None	New York
VM2	None	Seattle
WEB1	Web server	New York
WEB2	Web server	Seattle

DC1 hosts all the operation master roles.

VM1 and VM2 are connected to the internet.

WEB1 and WEB2 run an Internet Information Services (IIS) web app named Webapp1.

On-premises Network

The New York and Seattle offices are connected by using redundant WAN links. The client computers in each office get IP addresses from their local DHCP server.

DHCP1 contains a scope named Scope1 that has addresses for the New York office, DHCP2 contains a scope named Scope2 that has addresses for the Seattle office.

Identity Infrastructure

The network contains a single on-premises Active Directory Domain Services (AD DS) domain named corp.fabrikam.com. Currently, all the service accounts use individual domain user accounts.

All domain controllers have the DNS Server role installed and host a copy of the Active Directory integrated DNS zone of corp.fabrikam.com.

The corp.fabrikam.com AD DS domain syncs with an Azure Active Directory (Azure AD) tenant.

Group Policy Objects (GPOs)

The corp.fabrikam.com domain contains the organizational units (OUs) and custom Group Policy Objects (GPOs) shown in the following table

OU name	Linked GPO	Description
AllUsers	GPO1	Contains all the user accounts in the domain
AllComputers	GPO2	Contains all the computer accounts for the client computers in the domain
AllServers	GPO3	Contains all the computer accounts for Windows servers
VirtualDesktops	GPO4	A new OU that will contain the computers account for AzureVirtual Desktop session hosts

Requirements

Planned Changes

Fabrikam identifies the following planned changes:

- Create a single Azure subscription named Sub1 that will contain a single Azure virtual network named Vnet1.
- Replace the WAN links between the Seattle and New York offices by using Azure Virtual WAN and ExpressRoute. Both on premises offices will be connected to Vnet1 by using ExpressRoute.
- Create three Azure file shares named newyorkfiles, seattlefiles, and companyfiles.
- Create a domain controller named dc3.corp.fabrikam.com in Vnet1.
- Deploy an Azure Virtual Desktop host pool to Vnet1. The Azure Virtual Desktop session hosts will be hybrid Azure AD-joined.
- License all servers for Microsoft Defender for servers.

- Use Azure Policy to enforce configuration management policies on the servers in Azure and on-premises.

Networking Requirements

Fabrikam identifies the following networking requirements:

- Implement Virtual WAN and ensure that all the network traffic between the sites uses Virtual WAN. All communications must occur over ExpressRoute.
- If a DHCP server fails, ensure that the client computers can continue to receive their dynamic IP address and renew their existing lease.
- Ensure that the resources in Vnet1 can resolve the names of the on-premises servers in the corp.fabrikam.com domain.

Security Requirements

Fabrikam identifies the following security requirements:

- Apply GPO4 to the Azure Virtual Desktop session hosts. Ensure that Azure Virtual Desktop user sessions lock after being idle for 10 minutes. Users must be able to control the lockout time manually from their client computer.
- Ensure that server administrators request approval before they can establish a Remote Desktop connection to an Azure virtual machine. If the request is approved, the connection must be established within two hours.
- Prevent user passwords from containing all or part of words that are based on the company name, such as Fab, f@br1kAm or fabr!|. Ensure that all instances of Webapp1 use the same service account. The password of the service account must change automatically every 30 days.
- Prevent domain controllers from directly contacting hosts on the internet.

File Sharing Requirements

You need to configure the synchronization of Azure files to meet the following requirements:

- Ensure that seattlefiles syncs to FS2.
- Ensure that newyorkfiles syncs to FS1.
- Ensure that companyfiles syncs to both FS1 and FS2.

You need to configure Azure File Sync to meet the file sharing requirements.

What should you do? To answer, select the appropriate options in the answer area.

Minimum number of sync groups to create:

Minimum number of Storage Sync Services to create:

ANSWER:

Minimum number of sync groups to create:

Minimum number of Storage Sync Services to create:

QUESTION NO: 6

REFER THE ABOVE CASE STUDY

You need to implement a name resolution solution that meets the networking requirements.

Which two actions should you perform? Each correct answer presents part of the solution.

- A. Configure the DNS Servers settings for Vnet1.
- B. On DC3, install the DNS Server role.
- C. Create a virtual network link in the corp.fabrikam.com Azure private DNS zone.
- D. Configure a conditional forwarder on DC3.
- E. Enable autoregistration in the corp.fabrikam.com Azure private DNS zone.
- F. Create an Azure private DNZ zone named corp.fabrikam.com.
- G. Create an Azure DNZ zone named corp.fabrikam.com

QUESTION NO: 68

REFER THE ABOVE CASE STUDY

You need to configure network communication between the Seattle and New York offices. The solution must meet the networking requirements.

What should you configure? To answer, select the appropriate options in the answer area.

On a Virtual WAN hub:

An ExpressRoute gateway
A virtual network gateway
An ExpressRoute circuit connection

In the offices:

An ExpressRoute circuit connection
A Site-to-Site VPN
An Azure application gateway
An on-premises data gateway

ANSWER:

On a Virtual WAN hub:

An ExpressRoute gateway
A virtual network gateway
An ExpressRoute circuit connection

In the offices:

An ExpressRoute circuit connection
A Site-to-Site VPN
An Azure application gateway
An on-premises data gateway

QUESTION NO: 69

REFER THE ABOVE CASE STUDY

You need to configure remote administration to meet the security requirements.

What should you use?

- A. an Azure Bastion host
- B. Azure AD Privileged Identity Management (PIM)
- C. the Remote Desktop extension for Azure Cloud Services
- D. just in time (JIT) VM access**

QUESTION NO: 70

REFER THE ABOVE CASE STUDY

You need to implement an availability solution for DHCP that meets the networking requirements.

Which two actions should you perform? Each correct answer presents part of the solution.

- A. On DHCP1, create a scope that contains 25 percent of the IP addresses from Scope2.
- B. On the router in each office, configure a DHCP relay.**
- C. DHCP2, configure a scope that contains 25 percent of the IP addresses from Scope1.

D. On each DHCP server, install the Failover Clustering feature and add the DHCP cluster role.

E. On each DHCP scope, configure DHCP failover.

QUESTION NO: 71

REFER THE ABOVE CASE STUDY

You are planning the implementation Azure Arc to support the planned changes.

You need to configure the environment to support configuration management policies.

What should you do?

A. Create a hybrid runbook worker in Azure Automation.

B. Deploy the Azure Monitor agent to all the servers.

C. Deploy the Azure Connected Machine agent to all the servers.

D. Hybrid Azure AD join all the servers.

QUESTION NO: 72

REFER THE ABOVE CASE STUDY

You need to configure the Group Policy settings to ensure that the Azure Virtual Desktop session hosts meet the security requirements.

What should you configure?

A. loopback processing in GPO4

B. security filtering for the link of GPO1

C. loopback processing in GPO1

D. the Enforced property for the link of GPO4

E. the Enforced property for the link of GPO1

F. security filtering for the link of GPO4

QUESTION NO: 73

REFER THE ABOVE CASE STUDY

Which three actions should you perform in sequence to meet the security requirements for Webapp1? To answer, move the appropriate actions from the list of actions to the answer area and arrange them in the correct order.

Actions

- Create a standalone managed service account (sMSA) in AD DS.
- Configure the IIS application pool to run as Network Service.
- Configure the IIS application pool to run as a specified user account.
- Create a group managed service account (gMSA) in Active Directory.
- Create a system-assigned managed identity in Azure AD.
- Create a user-assigned managed identity in Azure AD.
- Create the Key Distribution Services (KDS) root key in AD DS.

Answer Area



ANSWER:

Actions

- Create a standalone managed service account (sMSA) in AD DS.
- Configure the IIS application pool to run as Network Service.
- Configure the IIS application pool to run as a specified user account.
- Create a group managed service account (gMSA) in Active Directory.
- Create a system-assigned managed identity in Azure AD.
- Create a user-assigned managed identity in Azure AD.
- Create the Key Distribution Services (KDS) root key in AD DS.

Answer Area

- Create the Key Distribution Services (KDS) root key in AD DS.
- Create a group managed service account (gMSA) in Active Directory.
- Configure the IIS application pool to run as a specified user account.



QUESTION NO: 74

REFER THE ABOVE CASE STUDY

You need to meet the security requirements for passwords.

Where should you configure the components for Azure AD Password Protection? To answer, drag the appropriate components to the correct locations. Each component may be used once, more than once, or not at all. You may need to drag the split bar between panes or scroll to view content.

Locations

- DC1 only
- All the domain controllers
- VM1 and VM2
- The Azure AD tenant

Answer Area

- The Azure AD Password Protection DC agent: Location
- The Azure AD Password Protection proxy service: Location
- A custom banned password list: Location

ANSWER:



QUESTION NO: 75

REFER THE ABOVE CASE STUDY

What should you implement for the deployment of DC3?

- A. Azure Active Directory Domain Services (Azure AD DS)
- B. an Azure virtual machine**
- C. an Azure AD administrative unit
- D. Azure AD Application Proxy

QUESTION NO: 76

You have an on-premises server named Server1 that runs Windows Server. Server1 contains an app named App1 and a firewall named Firewall1.

You have an Azure subscription.

Internal users connect to App1 by using WebSockets.

You need to make App1 available to users on the internet. The solution must minimize the number of inbound ports open on Firewall1.

What should you include in the solution?

- A. Microsoft Application Request Routing (ARR) Version 2
- B. Azure Application Gateway
- C. Azure Relay**
- D. Web Application Proxy

QUESTION NO: 77

You have servers that run Windows Server 2022 as shown in the following table.

Name	Location	Description
Server1	On-premises	Hosts a Microsoft SQL Server 2019 instance
Server2	Azure	Contains the .NET SDK

Server2 contains a .NET app named App1.

You need to establish a WebSocket connection from App1 to the SQL Server instance on Server1. The solution must meet the following requirements:

- Minimize the number of network ports that must be open on the on-premises network firewall.
- Minimize administrative effort.

What should you create first?

- A. an Azure Relay namespace
- B. an Azure VPN gateway
- C. a WFC relay connection
- D. a hybrid connection**

QUESTION NO: 78

You are planning the deployment of DNS to a new network.

You have three internal DNS servers as shown in the following table.

Name	Location	IP address	Local DNS zone
Server1	Montreal	10.0.1.10	contoso.local
Server2	Toronto	10.0.2.10	east.contoso.local
Server3	Seattle	10.0.3.10	west.contoso.local

The contoso.local zone contains zone delegations for east.contoso.local and west.contoso.local. All the DNS servers use root hints.

You need to ensure that all the DNS servers can resolve the names of all the internal namespaces and internet hosts.

Solution: On Server2, you create a conditional forwarder for contoso.local and west.contoso.local. On Server3, you create a conditional forwarder for contoso.local and east.contoso.local.

Does this meet the goal?

- A. Yes
- B. No**

QUESTION NO: 79

Case Study

This is a case study. Case studies are not timed separately. You can use as much exam time as you would like to complete each case. However, there may be additional case studies and sections on this exam. You must manage your time to ensure that you are able to complete all questions included on this exam in the time provided.

To answer the questions included in a case study, you will need to reference information that is provided in the case study. Case studies might contain exhibits and other resources that provide more information about the scenario that is described in the case study. Each question is independent of the other questions in this case study.

At the end of this case study, a review screen will appear. This screen allows you to review your answers and to make changes before you move to the next section of the exam. After you begin a new section, you cannot return to this section.

To start the case study

To display the first question in this case study, click the Next button. Use the buttons in the left pane to explore the content of the case study before you answer the questions. Clicking these buttons displays information such as business requirements, existing environment, and problem statements. If the case study has an All-Information tab, note that the information displayed is identical to the information displayed on the subsequent labs. When you are ready to answer a question, click the Question button to return to the question.

Overview

Contoso, Ltd. is a company that has a main office in Seattle and two branch offices in Los Angeles and Montreal.

Existing Environment

AD DS Environment

The network contains an on premises Active Directory Domain Services (AD DS) forest named contoso.com. The forest contains two domains named contoso.com and canada.contoso.com.

The forest contains the domain controllers shown in the following table.

Name	Domain	Active Directory site
DC1	contoso.com	Seattle
DC2	contoso.com	Los Angeles
DC3	canada.contoso.com	Montreal
DC4	contoso.com	Montreal
DC5	canada.contoso.com	Seattle

All the domain controllers are global catalog servers.

Server infrastructure

The network contains the servers shown in the following table.

Name	Organizational Unit (OU)	Server role	Domain	Active Directory site
Server1	Member Servers	None	canada.contoso.com	Montreal
Server2	Member Servers	Hyper-V	canada.contoso.com	Montreal
Server3	Member Servers	None	canada.contoso.com	Montreal

A server named Server4 runs Windows Server and is in a workgroup. Windows Firewall on Server4 uses the private profile.

Server2 hosts three virtual machines named VM1, VM2, and VM3.

VM3 is a file server that stores data in the volumes shown in the following table.

Name	File system
C	NTFS
D	NTFS
E	ReFS
F	ExFat

Group Policies

The contoso.com domain has the Group Policies Objects (GPOs) shown in the following table.

Name	Minimum password length	Linked to
GPO1	14	OU1
GPO2	8	Member Servers
Default Domain Policy	10	contoso.com

Existing Identities

The forest contains the users shown in the following table.

Name	In OU	Member of
Contoso\Admin1	Contoso\OU1	Contoso\Enterprise Admins
Contoso\Admin2	Contoso\OU1	Contoso\Domain Admins
Canada\Admin3	Canada\OU2	Canada\Domain Admins
Contoso\User1	Contoso\OU3	Contoso\Domain Users

The forest contains the groups shown in the following table.

Name	Domain	Type
Group1	contoso.com	Universal security group
Group2	contoso.com	Global security group
Group3	contoso.com	Domain local security group
Group4	canada.contoso.com	Global distribution group
Group5	canada.contoso.com	Global distribution group
Group6	canada.contoso.com	Domain local distribution group

Current Problems

When an administrator signs in to the console of VM2 by using Virtual Machine Connection, and then disconnects from the session without signing out, another administrator can connect to the console session as the currently signed in user.

Requirements

Technical Requirements

Contoso identifies the following technical requirements:

- Change the replication schedule for all site links to 30 minutes.
- Promote Server1 to a domain controller in canada.contoso.com.
- Install and authorize Server3 as a DHCP server.
- Ensure that User1 can manage the membership of all the groups in Contoso\OU3.
- Ensure that you can manage Server4 from Server1 by using PowerShell remoting.
- Ensure that you can run virtual machines on VM1.
- Force users to provide credentials when they connect to VM2.
- On VM3, enable Data Deduplication on all volumes that support the feature.

You need to meet the technical requirements for VM3.

On which volumes can you enable Data Deduplication?

- A. C and D only
- B. D only
- C. C, D, E, and F
- D. D and E only**

E. D, E, and F only

QUESTION NO: 80

REFER THE ABOVE CASE STUDY

You need to meet the technical requirements for Server4.

Which cmdlets should you run on Server1 and Server4? To answer, select the appropriate options in the answer area.

Server1:

<input type="checkbox"/> Enable-PSRemoting
<input type="checkbox"/> Enable-ServerManagerStandardUserRemoting
<input type="checkbox"/> Set-Item
<input type="checkbox"/> Start-Service

Server4:

<input type="checkbox"/> Enable-PSRemoting
<input type="checkbox"/> Enable-ServerManagerStandardUserRemoting
<input type="checkbox"/> Set-Item
<input type="checkbox"/> Start-Service

ANSWER:

Server1:

<input type="checkbox"/> Enable-PSRemoting
<input type="checkbox"/> Enable-ServerManagerStandardUserRemoting
<input checked="" type="checkbox"/> Set-Item
<input type="checkbox"/> Start-Service

Server4:

<input checked="" type="checkbox"/> Enable-PSRemoting
<input type="checkbox"/> Enable-ServerManagerStandardUserRemoting
<input type="checkbox"/> Set-Item
<input type="checkbox"/> Start-Service

QUESTION NO: 81

REFER THE ABOVE CASE STUDY

For each of the following statements, select Yes if the statement is true. Otherwise, select No.

Statements	Yes	No
Admin1 must use a password that has at least 14 characters.	<input type="radio"/>	<input type="radio"/>
User1 must use a password that has at least 10 characters.	<input type="radio"/>	<input type="radio"/>
If Admin1 creates a new local user on Server1, the password for the new user must be at least eight characters.	<input type="radio"/>	<input type="radio"/>

ANSWER:

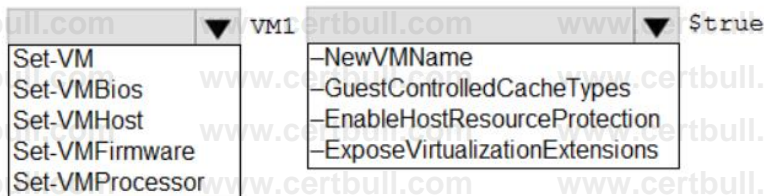
Statements	Yes	No
Admin1 must use a password that has at least 14 characters.	<input type="radio"/>	<input checked="" type="radio"/>
User1 must use a password that has at least 10 characters.	<input type="radio"/>	<input checked="" type="radio"/>
If Admin1 creates a new local user on Server1, the password for the new user must be at least eight characters.	<input type="radio"/>	<input checked="" type="radio"/>

QUESTION NO: 83

REFER THE ABOVE CASE STUDY

You need to meet the technical requirements for VM1.

Which cmdlet should you run first? To answer, select the appropriate options in the answer area.



ANSWER:



QUESTION NO: 84

REFER THE ABOVE CASE STUDY

You need to meet the technical requirements for VM2.

What should you do?

- A. Implement shielded virtual machines.
- B. Enable the Guest services integration service.
- C. Implement Credential Guard.
- D. Enable enhanced session mode.

QUESTION NO: 85

REFER THE ABOVE CASE STUDY

You need to meet the technical requirements for Server3.

Which users can perform the required tasks?

- A. Admin3 only
- B. Admin1 and Admin3 only
- C. Admin1 only
- D. Admin1, Admin2, and Admin3
- E. Admin1 and Admin2 only

QUESTION NO: 86

REFER THE ABOVE CASE STUDY

Which groups can you add to Group3 and Group5? To answer, select the appropriate options in the answer area.

Group3:

Group6 only
Group1 and Group2 only
Group1 and Group4 only
Group1, Group2, Group4, and Group5 only
Group1, Group2, Group4, Group5, and Group6

Group5:

Group1 only
Group4 only
Group6 only
Group2 and Group4 only
Group4 and Group6 only

ANSWER:

Group3:

Group6 only
Group1 and Group2 only
Group1 and Group4 only
Group1, Group2, Group4, and Group5 only
Group1, Group2, Group4, Groups, and Group6

Group5:

Group1 only
Group4 only
Group6 only
Group2 and Group4 only
Group4 and Group6 only

QUESTION NO: 87

REFER THE ABOVE CASE STUDY

You need to meet the technical requirements for User1. The solution must use the principle of least privilege.

What should you do?

- A. Add User1 to the Server Operators group in contoso.com.
- B. Create a delegation on contoso.com.
- C. Add User1 to the Account Operators group in contoso.com.
- D. Create a delegation on OU3.**

QUESTION NO: 88

REFER THE ABOVE CASE STUDY

You need to meet the technical requirements for the site links.

Which users can perform the required tasks?

- A. Admin1, Admin2, and Admin3
- B. Admin1 and Admin3 only
- C. Admin1 only
- D. Admin1 and Admin2 only**
- E. Admin3 only

QUESTION NO: 89

REFER THE ABOVE CASE STUDY

You need to meet the technical requirements for Server1.

Which users can currently perform the required tasks?

- A. Admin3 only
- B. Admin1 and Admin3 only**
- C. Admin1 only
- D. Admin1, Admin2, and Admin3

QUESTION NO: 90

Your network contains an Active Directory domain, a web app named App1, and a perimeter network. The perimeter network contains a server named Server1 that runs Windows Server.

You plan to provide external access to App1.

You need to implement the Web Application Proxy role service on Server1.

Which role should you add to Server1, and which role should you add to the network? To answer, drag the appropriate roles to the correct targets. Each role may be used once, more than once, or not at all. You may need to drag the split bar between panes or scroll to view content.

Roles	Answer Area
Active Directory Certificate Services	Role on Server1: <input type="text"/>
Active Directory Federation Services	Role on the network: <input type="text"/>
Network Policy and Access Services	
Remote Access	

ANSWER:

Role on Server1: Remote Access

Role on the network: Active Directory Federation Services

QUESTION NO: 91

You have an on-premises server named Server1 that runs Windows Server.

You have an Azure subscription that contains a virtual network named VNet1.

You need to connect Server1 to VNet1 by using Azure Network Adapter.

What should you use?

- A. the Azure portal
- B. Azure AD Connect
- C. Device Manager
- D. Windows Admin Center

QUESTION NO: 92

You have an on-premises server named Server1 that runs Windows Server.

You have an Azure virtual network that contains an Azure virtual network gateway.

You need to connect only Server1 to the Azure virtual network.

What should you use?

- A. a Site-to-Site VPN
- B. Azure Network Adapter
- C. an ExpressRoute circuit
- D. Azure Extended Network

QUESTION NO: 93

You have an on-premises Active Directory Domain Services (AD DS) domain that syncs with an Azure Active Directory (Azure AD) tenant. The on-premises network is connected to Azure by using a Site-to-Site VPN.

You have the DNS zones shown in the following table.

Name	Location	Description
contoso.com	A domain controller named DC1 on the on-premises network	Provide name resolution on-premises
fabrikam.com	An Azure private DNS zone	Provides name resolution for all Azure virtual networks

You need to ensure that names from fabrikam.com can be resolved from the on-premises network.

Which two actions should you perform? Each correct answer presents part of the solution.

- A. Create a stub zone for fabrikam.com on DC1.
- B. Create a conditional forwarder for fabrikam.com on DC1.**
- C. Create a secondary zone for fabrikam.com on DC1.
- D. Deploy an Azure virtual machine that runs Windows Server. Modify the DNS Servers settings for the virtual network.
- E. Deploy an Azure virtual machine that runs Windows Server. Configure the virtual machine as a DNS forwarder.**

QUESTION NO: 94

Your network contains an Active Directory Domain Services (AD DS) domain named contoso.com. The domain contains the VPN servers shown in the following table.

Name	IP address
VPN1	172.16.0.254
VPN2	131.10.15.254
VPN3	10.10.0.254

You have a server named NPS1 that has Network Policy Server (NPS) installed. NPS1 has the following RADIUS clients:

```
Name : NPSclient1
Address : 172.16.0.254
AuthAttributeRequired : False
SharedSecret : Pa55w.rd
VendorName : RADIUS Standard
Enabled : False

Name : NPSclient2
Address : 131.10.15.254
AuthAttributeRequired : False
SharedSecret : Pa55w.rd
VendorName : RADIUS Standard
Enabled : True

Name : NPSclient3
Address : 172.16.1.254
AuthAttributeRequired : False
SharedSecret : Pa55w.rd
VendorName : RADIUS Standard
Enabled : True
```

VPN1, VPN2, and VPN3 use NPS1 for RADIUS authentication. All the users in contoso.com are allowed to establish VPN connections.

For each of the following statements, select Yes if the statement is true. Otherwise, select No.

Statements

Yes **No**

The contoso.com users can authenticate successfully when they establish a VPN connection to VPN1.

The contoso.com users can authenticate successfully when they establish a VPN connection to VPN2.

The contoso.com users can authenticate successfully when they establish a VPN connection to VPN3.

ANSWER:

Statements

Yes **No**

The contoso.com users can authenticate successfully when they establish a VPN connection to VPN1.

The contoso.com users can authenticate successfully when they establish a VPN connection to VPN2.

The contoso.com users can authenticate successfully when they establish a VPN connection to VPN3.

QUESTION NO: 95

You have servers that have the DNS Server role installed. The servers are configured as shown in the following table.

Name	Office	Local DNS zone	IP address
Server1	Paris	contoso.com	10.1.1.1
Server2	New York	None	10.2.2.2

All the client computers in the New York office use Server2 as the DNS server.

You need to configure name resolution in the New York office to meet the following requirements:

- Ensure that the client computers in New York can resolve names from contoso.com.
- Ensure that Server2 forwards all DNS queries for internet hosts to 131.107.100.200.

The solution must NOT require modifications to Server1.

Which two components should you configure on Server2? Each correct answer presents part of the solution.

- A. a forwarder
- B. a conditional forwarder
- C. a delegation
- D. a secondary zone
- E. a reverse lookup zone

You enable Data Deduplication on drive D and select the **General purpose file server** workload.

QUESTION NO: 96

Your network contains an Active Directory Domain Services (AD DS) domain. The domain contains 10 servers that run Windows Server. The servers have static IP addresses.

You plan to use DHCP to assign IP addresses to the servers.

You need to ensure that each server always receives the same IP address.

Which type of identifier should you use to create a DHCP reservation for each server?

- A. NetBIOS name
- B. MAC address**
- C. fully qualified domain name (FQDN)
- D. universally unique identifier (UUID)

QUESTION NO: 97

You have an Azure virtual machine named VM1 that runs Windows Server.

You need to configure the management of VM1 to meet the following requirements:

- Require administrators to request access to VM1 before establishing a Remote Desktop connection.
- Limit access to VM1 from specific source IP addresses.
- Limit access to VM1 to a specific management port.

What should you configure?

- A. a network security group (NSG)
- B. Azure Active Directory (Azure AD) Privileged Identity Management (PIM)
- C. Microsoft Defender for Cloud**
- D. Azure Front Door

QUESTION NO: 98

Your network contains an Active Directory Domain Services (AD DS) domain named contoso.com. The domain contains a DNS server named Server1. Server1 hosts a DNS zone named fabrikam.com that was signed by DNSSEC.

You need to ensure that all the member servers in the domain perform DNSSEC validation for the fabrikam.com namespace. What should you do?

- A. On Server1, run the Add-DnsServerTrustAnchor cmdlet.
- B. On each member server, run the Add-DnsServerTrustAnchor cmdlet.

C. From a Group Policy Object (GPO), add a rule to the Name Resolution Policy Table (NRPT).

D. From a Group Policy Object (GPO), modify the Network List Manager policies.

QUESTION NO: 99

Your network contains two VLANs for client computers and one VLAN for a datacenter. Each VLAN is assigned an IPv4 subnet. Currently, all the client computers use static IP addresses.

You plan to deploy a DHCP server to the VLAN in the datacenter.

You need to use the DHCP server to provide IP configurations to all the client computers. What is the minimum number of scopes and DHCP relays you should create? To answer, select the appropriate option the answer area.

DHCP scopes:

1
2
3
4

DHCP relays:

1
2
3
4

ANSWER:

DHCP scopes:

1
2
3
4

DHCP relays:

1
2
3
4

QUESTION NO: 100

You have an on-premises network that is connected to an Azure virtual network by using a Site-to-Site VPN. Each network contains a subnet that has the same IP address space. The on-premises subnet contains a virtual machine.

You plan to migrate the virtual machine to the Azure subnet.

You need to migrate the on premises virtual machine to Azure without modifying the IP address.

The solution must minimize administrative effort.

What should you implement before you perform the migration?

- A. Azure Extended Network
- B. Azure Virtual Network NAT
- C. Azure Application Gateway
- D. Azure virtual network peering

QUESTION NO: 101

You have a server that runs Windows Server and has the DHCP Server role installed. The server has a scope named Scope1 that has the following configurations:

- Address range: 192.168.0.2 to 192.168.1.254
- Mask: 255.255.254.0
- Router: 192.168.0.1
- Lease duration: 3 days
- DNS server: 172.16.0.254

You have 50 Microsoft Teams Phone devices from the same vendor. All the devices have MAC addresses within the same range.

You need to ensure that all the Teams Phone devices that receive a lease from Scope1 have IP addresses in the range of 192.168.1.100 to 192.168.1.200. The solution must NOT affect other DHCP clients that receive IP configurations from Scope1.

What should you create?

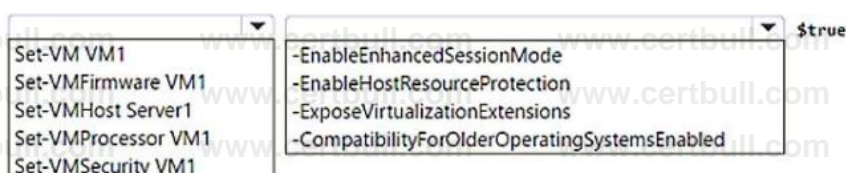
- A. a scope
- B. a filter
- C. scope options
- D. a policy

QUESTION NO: 102

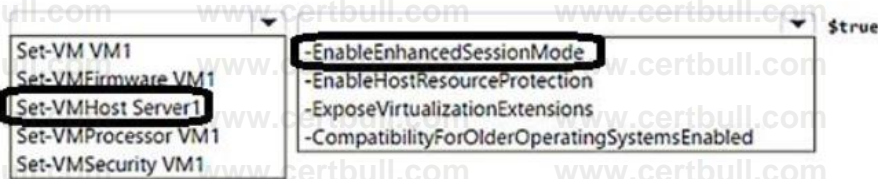
You have a server named Server1 that runs Windows Server and has the Hyper-V server role installed. Server1 contains a virtual machine named VM1 that runs Windows Server.

You need to install the Hyper-V server role on VM1.

Which PowerShell command should you run first? To answer, select the appropriate options in the answer area.



ANSWER:



QUESTION NO: 103

You have an Azure subscription that contains a virtual network named VNet1. Vnet1 contains three subnets named Subnet1, Subnet2, and Subnet3.

You deploy a virtual machine that has the following settings:

- Name: VM1
- Subnet: Subnet2
- Network interface name: NIC1
- Operating system: Windows Server 2022

You need to ensure that VM1 can route traffic between Subnet1 and Subnet3. The solution must minimize administrative effort.

What should you do? To answer, select the appropriate options in the answer area.

From the Azure portal:

Associate a routing table with Subnet2.
Attach two additional interfaces to VM1.
Enable IP forwarding for NIC1.

On VM1:

Install and configure a network controller.
Install and configure Routing and Remote Access.
Run the route add command.

ANSWER:

From the Azure portal:

Associate a routing table with Subnet2.
Attach two additional interfaces to VM1.
Enable IP forwarding for NIC1.

On VM1:

Install and configure a network controller.
Install and configure Routing and Remote Access.
Run the route add command.

QUESTION NO: 104

You have an Azure subscription and a computer named Computer1 that runs Windows 11.

From the Azure portal, you deploy a virtual machine named VM1 that runs Windows Server.

You configure VM1 to use the default settings.

You need to ensure that you can connect to VM1 by using PowerShell remoting.

Which cmdlet should you run, and what should you use to run the cmdlet? To answer, select the appropriate options in the answer area.

Run from:

Cmdlet:

ANSWER:

Run from:

Cmdlet:

QUESTION NO: 105

You have a Windows Server container host named Server1. You start the containers on Server1 as shown in the following table.

Name	Image	Uses Hyper-V isolation	Process running on container
Container1	microsoft/iis	No	ProcessA
Container2	microsoft/iis	No	ProcessB
Container3	microsoft/iis	Yes	ProcessC
Container4	microsoft/iis	Yes	ProcessD

You need to validate the status of ProcessA and ProcessC.

Where can you verify that ProcessA and ProcessC are in a running state? To answer, select the appropriate options in the answer area.

ProcessA:

ProcessC:

ANSWER:

ProcessA:

ProcessC:

QUESTION NO: 106

You have an Azure subscription that contains the virtual machines shown in the following table.

Name	Operating system
VM1	Windows Server 2022 Datacenter: Azure Edition
VM2	Windows Server 2022 Datacenter: Azure Edition Core
VM3	Windows Server 2022 Datacenter
VM4	Windows Server 2019 Datacenter

You plan to implement Azure Automate for Windows Server.

You need to identify the operating system prerequisites.

Which virtual machines support Hotpatch, and which virtual machines support SMB over QUIC? To answer, select the appropriate options in the answer area.

Hotpatch:

SMB over QUIC:

ANSWER:

Hotpatch:

SMB over QUIC:

QUESTION NO: 107

You have an Azure subscription. The subscription contains a virtual machine named VM1 that runs Windows Server. VM1 contains a 128-GB operating system disk.

You need to increase the size of volume C on VM1 to 250 GB.

Which four actions should you perform in sequence.

To answer, move the appropriate actions from the list of actions to the answer area and arrange them in the correct order.

Actions	Answer Area
Redeploy VM1.	
Resize VM1.	
Start VM1.	
Resize the operating system disk.	
Resize volume C.	
Stop VM1.	

ANSWER:

Answer Area
Stop VM1.
Resize the operating system disk.
Start VM1.
Resize volume C.

You have an Azure subscription. The subscription contains a virtual machine named VM1 that runs Windows Server.

You build an app named App1.

You need to configure continuous integration and continuous deployment (CI/CD) of App1 to VM1. What should you create first?

- A. an App Service Environment
- B. an Azure DevOps organization**
- C. a managed identity
- D. an Azure Automation account

QUESTION NO: 108

You have a server named Server1 that has the Hyper-V server role installed.

Server1 hosts the virtual machines shown in the following exhibit.

Name	Configuration Version	State	CPU Usage	Uptime
VM1	10.0	Running	2%	03:09:45
VM2	9.0	Running	2%	03:07:02
VM3	8.0	Running	2%	03:06:02

Use the drop-down menus to select the answer choice that completes each statement based on the information presented in the graphic.

[Answer choice] can have production checkpoints.

- Only VM1
- Only VM1 and VM2
- VM1, VM2, and VM3

[Answer choice] can be hibernated.

- Only VM1
- Only VM1 and VM2
- VM1, VM2, and VM3

ANSWER:

[Answer choice] can have production checkpoints.

- Only VM1
- Only VM1 and VM2
- VM1, VM2, and VM3**

[Answer choice] can be hibernated.

- Only VM1
- Only VM1 and VM2**
- VM1, VM2, and VM3

QUESTION NO: 109

You have an Azure subscription that contains a virtual machine named VM1 as shown in the following exhibit.

VM1
Virtual machine

Connect Start Restart Stop Capture Delete Refresh Open in mobile CLI / PS

Essentials

Resource group (move) RG1	Operating system Windows (Windows Server 2022 Datacenter Azure Edition)
Status Running	Size Standard D8s v3 (8 vcpus, 32 GiB memory)
Location East US (Zone 1)	Public IP address 20.84.95.96
Subscription (move) Virtual Studio Enterprise Subscription	Virtual network/subnet VNet1/Subnet2
Subscription ID 7fef66e-8694-4b54-beae-17fd819d4873	DNS name Not configured
Availability zone 1	
Tags (edit) Click here to add tags	

The subscription has the disks shown in the following table.

Name	Resource group	Location	Availability zone
Disk1	RG1	East US	None
Disk2	RG2	East US	1
Disk3	RG1	Central US	None
Disk4	RG1	Central US	1

Which disks can you attach as data disks to VM1?

- A. Disk2 only
- B. Disk4 only
- C. Disk1 and Disk2 only
- D. Disk2 and Disk4 only
- E. Disk1, Disk3, and Disk4 only
- F. Disk1, Disk2, Disk3, and Disk4

QUESTION NO: 110

You have an Azure virtual machine named Server1 that runs a network management application.

Server1 has the following network configurations:

- Network interface: Nic1
- IP address: 10.1.1.1/24
- Connected to: Vnet1/Subnet1

You need to connect Server1 to an additional subnet named Vnet1/Subnet2.

What should you do?

- A. Modify the IP configurations of Nic1.
- B. Add an IP configuration to Nic1.
- C. Add a network interface to Server1.
- D. Create a private endpoint on Subnet2.

QUESTION NO: 111

You have an Azure subscription that contains the virtual networks shown in the following table.

Name	Subnet	Location
VNet1	Subnet11, Subnet12	West US
VNet2	Subnet21	West US
VNet3	Subnet31	Central US

You deploy a virtual machine named VM1 that runs Windows Server. VM1 is connected to Subnet11.

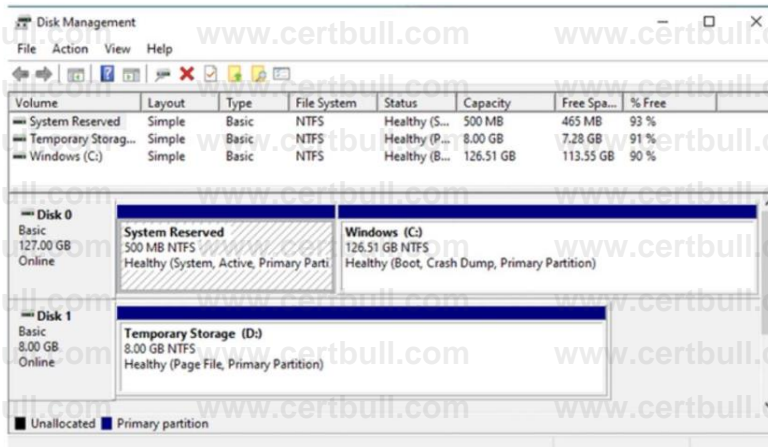
You plan to add an additional network interface named NIC1 to VM1.

To which subnets can NIC1 be attached?

- A. Subnet11 only
- B. Subnet12 only**
- C. Subnet11 and Subnet12 only
- D. Subnet12 and Subnet21 only
- E. Subnet11, Subnet12, Subnet21, and Subnet31

QUESTION NO: 112

You create an Azure virtual machine named Server1 that runs Windows Server. Server1 has the disk configurations shown in the following exhibit.



You need to create a new 100-GB volume on Server1.

Which three actions should you perform in sequence? To answer, move the appropriate actions from the list of actions to the answer area and arrange them in the correct order.

Actions

- Shut down Server1.
- Initialize the disk.
- Create a new simple volume.
- Start Server1.
- Create and attach a new data disk.
- Create a new spanned volume.

Answer Area



ANSWER:

- Create and attach a new data disk.
- Initialize the disk.
- Create a new simple volume.

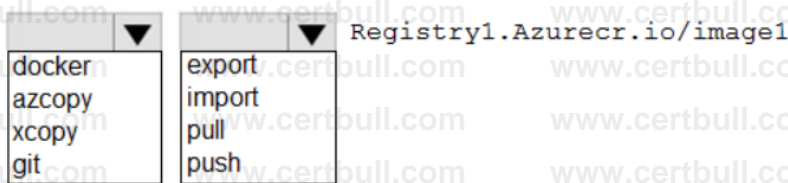
QUESTION NO: 113

You have a Windows Server container host named Server1 and an Azure subscription.

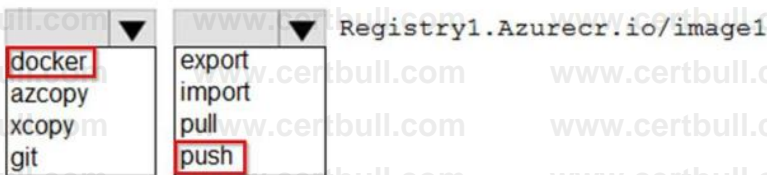
You deploy an Azure container registry named Registry1 to the subscription. On Server1, you create a container image named image1.

You need to store image1 in Registry1.

Which command should you run on Server1? To answer, select the appropriate options in the answer area.



ANSWER:



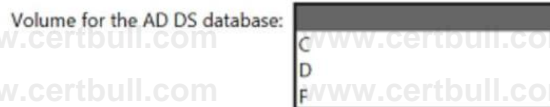
QUESTION NO: 114

You plan to deploy an Azure virtual machine that will run Windows Server. The virtual machine will host an Active Directory Domain Services (AD DS) domain controller and a drive named F: on a new virtual disk.

You need to configure storage for the virtual machine. The solution must meet the following requirements:

- Maximize resiliency for AD DS.
- Prevent accidental data loss.

How should you configure the storage? To answer, select the appropriate options in the answer area.



ANSWER:

Volume for the AD DS database:

A dropdown menu with a dark header. The options are 'C', 'D', and 'F'. The option 'F' is highlighted with a red box.

Caching configuration for the volume that hosts the database:

A dropdown menu with a dark header. The options are 'NONE', 'READ', and 'READ/WRITE'. The option 'NONE' is highlighted with a red box.

QUESTION NO: 115

Your network contains an on-premises Active Directory Domain Services (AD DS) domain named contoso.com. The domain contains three servers that run Windows Server and have the Hyper-V server role installed. Each server has a Switch Embedded Teaming (SET) team.

You need to verify that Remote Direct Memory Access (RDMA) and all the required Windows Server settings are configured properly on each server to support an Azure Stack HCI cluster.

What should you use?

- A. Server Manager
- B. the Get-NetAdapter cmdlet
- C. Failover Cluster Manager
- D. the Validate-DCB cmdlet**

QUESTION NO: 116

You plan to deploy an Azure virtual machine that will run Windows Server.

You need to ensure that an Azure Active Directory (Azure AD) user named user1@contoso.com can connect to the virtual machine by using the Azure Serial Console.

What should you do? To answer, select the appropriate options in the answer area.

Configure on the Azure virtual machine:

A dropdown menu with a dark header and a downward arrow. The options are 'Boot diagnostics with a custom storage account', 'Operating system guest diagnostics', and 'A system-assigned managed identity'. The first option is highlighted with a red box.

Assign the following role to User1:

A dropdown menu with a dark header and a downward arrow. The options are 'Virtual Machine Contributor', 'Virtual Machine Administrator Login', and 'Virtual Machine User Login'. The first option is highlighted with a red box.

ANSWER:

Configure on the Azure virtual machine:

A dropdown menu with a dark header and a downward arrow. The options are 'Boot diagnostics with a custom storage account', 'Operating system guest diagnostics', and 'A system-assigned managed identity'. The first option is highlighted with a red box.

Assign the following role to User1:

A dropdown menu with a dark header and a downward arrow. The options are 'Virtual Machine Contributor', 'Virtual Machine Administrator Login', and 'Virtual Machine User Login'. The first option is highlighted with a red box.

QUESTION NO: 117

You have a server named Server1 that hosts Windows containers.

You plan to deploy an application that will have multiple containers. Each container will be on the same subnet. Each container requires a separate MAC address and IP address. Each container must be able to communicate by using its IP address.

You need to create a Docker network that supports the deployment of the application.

Which type of network should you create?

- A. NAT
- B. transparent
- C. I2bridge
- D. I2tunnel

QUESTION NO: 118

You have an on-premises Active Directory Domain Services (AD DS) domain that syncs with an Azure Active Directory (Azure AD) tenant.

You plan to deploy 100 new Azure virtual machines that will run Windows Server. You need to ensure that each new virtual machine is joined to the AD DS domain.

What should you use?

- A. an Azure Resource Manager (ARM) template
- B. a Group Policy Object (GPO)
- C. Azure AD Connect
- D. an Azure management group

QUESTION NO: 119

You have a Windows Server container host named Server1 that has a single disk.

On Server1, you plan to start the containers shown in the following table.

Name	Description
Container1	Container1 is a Windows container that contains a web app in development. The container must NOT share a kernel with other containers.
Container2	Container2 is a Linux container that runs a web app. The container requires two static IP addresses.
Container3	Container3 is a Windows container that runs a database. The container requires a static IP address.

Which isolation mode can you use for each container? To answer, select the appropriate options in the answer area.

Container1:	Hyper-V isolation only Process isolation only Hyper-V isolation or process isolation
Container2:	Hyper-V isolation only Process isolation only Hyper-V isolation or process isolation
Container3:	Hyper-V isolation only Process isolation only Hyper-V isolation or process isolation

ANSWER:

Container1:	Hyper-V isolation only Process isolation only Hyper-V isolation or process isolation
Container2:	Hyper-V isolation only Process isolation only Hyper-V isolation or process isolation
Container3:	Hyper-V isolation only Process isolation only Hyper-V isolation or process isolation

QUESTION NO: 120

You have an Azure virtual machine named VM1 that runs Windows Server.

You perform the following actions on VM1:

- Create a folder named Folder1 on volume C.
- Create a folder named Folder2 on volume D.
- Add a new data disk to VM1 and create a new volume that is assigned drive letter E.
- Install an app named App1 on volume E.

You plan to resize VM1.

Which objects will present after you resize VM1?

- A. Folder1, volume E, and App1 only
- B. Folder1 only
- C. Folder1 and Folder2 only
- D. Folder1, Folder2, App1, and volume E**

QUESTION NO: 121

You have a server named Server1 that runs Windows Server and has the Hyper-V server role installed.

Server1 hosts a virtual machine named VM1. Server1 has an NVMe storage device that is assigned to VM1 by using Discrete Device Assignment.

You need to make the device available to the host.

Which four actions should you perform in sequence? To answer, move the appropriate actions from the list of actions to the answer area and arrange them in the correct order.

Actions

From Server1, stop VM1.

From Server1, run the Remove-VMAssignableDevice cmdlet.

From Server1, run the Mount-VMHostAssignableDevice cmdlet.

From Server1, enable the device by using Device Manager.

From VM1, disable the device by using Device Manager.

Answer Area



ANSWER:

Actions

From VM1, disable the device by using Device Manager.

Answer Area

From Server1, stop VM1.

From Server1, run the Remove-VMAssignableDevice cmdlet.

From Server1, run the Mount-VMHostAssignableDevice cmdlet.

From Server1, enable the device by using Device Manager.



QUESTION NO: 122

You have an Azure virtual machine named VM1 that runs Windows Server and has the following configurations:

- Size: D2s_v4
- Operating system disk: 127-GiB standard SSD• Data disk 128-GiB standard SSD
- Virtual machine generation: Gen 2

You plan to perform the following changes to VM1:

- Change the virtual machine size to D4s_v4.
- Detach the data disk.
- Add a new standard SSD.

Which changes require downtime for VM1?

- A. Detaching the data disk only and adding a new standard SSD.
- B. Detaching the data disk only.
- C. Changing the virtual machine size only.**
- D. Adding a new standard SSD only.

QUESTION NO: 123

You have a server named Server1 that runs Windows Server and has the DHCP Server role installed. Server1 contains the following single scope:

- Scope: 192.168.16.0
- Address pool: 192.168.16.1-192.168.16.254
- Subnet mask: 255.255.255.0
- Lease duration: 8 days

You have four testing devices that are configured with static IP addresses as shown in the following table.

Name	IP address
TestDevice1	192.168.16.242
TestDevice2	192.168.16.243
TestDevice3	192.168.16.244
TestDevice4	192.168.16.245

The test devices are turned on once a month.

You need to prevent Server1 from assigning the IP addresses allocated to the test devices to other devices when the test devices are offline. The solution must minimize administrative effort.

What should you do?

- A. Create a policy.
- B. Create reservations.**
- C. Configure the Scope options.
- D. Create an exclusion range.

QUESTION NO: 124

You plan to deploy a containerized application that requires .NET Core.

You need to create a container image for the application. The image must be as small as possible.

Which base image should you use?

- A. Windows Server
- B. Nano Server
- C. Windows
- D. Server Core

QUESTION NO: 125

You have a server named Host1 that has the Hyper-V server role installed. Host1 hosts a virtual machine named VM1.

You have a management server named Server1 that runs Windows Server. You remotely manage Host1 from Server1 by using Hyper-V Manager.

You need to ensure that you can access a USB hard drive connected to Server1 when you connect to VM1 by using Virtual Machine Connection.

Which two actions should you perform? Each correct answer presents part of the solution.

- A. From the Hyper-V Settings of Host1, select Allow enhanced session mode.
- B. From Virtual Machine Connection, select Show Options, and then select the USB hard drive.
- C. From Virtual Machine Connection, switch to a basic session.
- D. From Disk Management on Host1, select Rescan Disks.
- E. From Disk Management on Host1, attach a virtual hard disk.

QUESTION NO: 126

You have a Windows Server container host named Server1 and a container image named image1.

You need to start a container from image1. The solution must run the container on a Hyper-V virtual machine.

Which parameter should you specify when you run the docker run command?

- A. --expose
- B. --privileged
- C. --runtime
- D. --isolation
- E. --entrypoint

QUESTION NO: 127

You are planning the deployment of DNS to a new network.

You have three internal DNS servers as shown in the following table

Name	Location	IP address	Local DNS zone
Server1	Montreal	10.0.1.10	contoso.local
Server2	Toronto	10.0.2.10	east.contoso.local
Server3	Seattle	10.0.3.10	west.contoso.local

The Contoso. Local zone contains zone delegations for east.contoso.local and west.contoso.local. All the DNS servers use root hints.

You need to ensure that all the DNS servers can resolve the names of all the internal namespaces and internet hosts.

Solution: You configure Server2 and Server3 to forward DNS requests to 10.0.1.10.

Does this meet the goal?

- A. Yes
- B. No**

QUESTION NO: 128

Your network contains an Active Directory Domain Services (AD DS) domain named contoso.com.

You need to identify which server is the PDC emulator for the domain.

Solution: From Active Directory Users and Computers, you right-click contoso.com in the console tree, and then select Operations Master.

Does this meet the goal?

- A. Yes
- B. No**

QUESTION NO: 129

Your on-premises network contains a server named Server1 and uses an IP address space of 192.168.10.0/24.

You have an Azure virtual network that contains a subnet named Subnet1. Subnet1 uses an IP address space of 192.168.10.0/24.

You need to migrate Server1 to Subnet1. You must use Azure Extended Network to maintain the existing IP address of Server1.

What is the minimum number of virtual machines that you should deploy? To answer, select the appropriate options in the answer area.

Virtual machines that run Windows Server 2022
Azure Edition:

Virtual machines that run Windows Server 2019
or Windows Server 2022:

ANSWER:

Virtual machines that run Windows Server 2022
Azure Edition:

Virtual machines that run Windows Server 2019
or Windows Server 2022:

QUESTION NO: 130

You have an Azure subscription. The subscription contains a virtual machine named VM1 that runs Windows Server. You plan to manage VM1 by using a PowerShell runbook.

You need to create the runbook.

What should you create first?

- A. an Azure Automation account
- B. an Azure workbook
- C. a Log Analytics workspace
- D. a Microsoft Power Automate flow

QUESTION NO: 131

Your on-premises network contains an Active Directory domain named contoso.com and 500 servers that run Windows Server. All the servers are Azure Arc-enabled and joined to contoso.co.

You need to implement PowerShell Desired State Configuration (DSC) on all the servers. The solution must minimize administrative effort.

Where should you store the DSC scripts, and what should you use to apply DSC to the servers?

To answer, select the appropriate options in the answer area.

Store in:

- An Azure App Configuration store
- An Azure Automation account
- An Azure Policy definition

Use:

- A Group Policy Object (GPO) in Active Directory Domain Services (AD DS)
- Azure virtual machines extensions
- Guest configuration in Azure Policy

ANSWER:

Store in:

- An Azure App Configuration store
- An Azure Automation account**
- An Azure Policy definition

Use:

- A Group Policy Object (GPO) in Active Directory Domain Services (AD DS)
- Azure virtual machines extensions
- Guest configuration in Azure Policy**

QUESTION NO: 132

Your network contains an Active Directory Domain Services (AD DS) domain. The domain contains a server named Server1.

You implement Just Enough Administration (JEA) on Server1.

You need to perform remote administration tasks on Server by using only JEA.

What should you use?

- A. PowerShell only**
- B. Remote Server Administration Tools (RSAT) only
- C. PowerShell or Remote Desktop only
- D. PowerShell or Remote Server Administration Tools (RSAT) only
- E. Remote Server Administration Tools (RSAT) or Remote Desktop only
- F. PowerShell, Remote Server Administration Tools (RSAT), or Remote Desktop

QUESTION NO: 133

Your company has a main office and a branch office. The two offices are connected by using a WAN link. Each office contains a firewall that filters WAN traffic.

The network in the branch office contains 10 servers that run Windows Server. All servers are administered from the main office only.

You plan to manage the servers in the branch office by using a Windows Admin Center gateway.

On a server in the branch office, you install the Windows Admin Center gateway by using the defaults settings.

You need to configure the firewall in the branch office to allow the required inbound connection to the Windows Admin Center gateway.

Which inbound TCP port should you allow?

- A. 443
- B. 3389
- C. 5985
- D. 6516

QUESTION NO: 134

You have an Azure virtual machine named VM1 that has a private IP address only.

You configure the Windows Admin Center extension on VM1.

You have an on-premises computer that runs Windows 11. You use the computer for server management.

You need to ensure that you can use Windows Admin Center from the Azure portal to manage VM1.

What should you configure?

- A. an Azure Bastion host on the virtual network that contains VM1.
- B. a VPN connection to the virtual network that contains VM1.
- C. a private endpoint on the virtual network that contains VM1.
- D. a network security group (NSG) rule that allows inbound traffic on port 443.

QUESTION NO: 135

You have an on-premises Active Directory Domain Services (AD DS) domain that syncs with an Azure Active Directory (Azure AD) tenant.

You have an on-premises web app named WebApp1 that only supports Kerberos authentication.

You need to ensure that users can access WebApp1 by using their Azure AD account. The solution must minimize administrative effort.

What should you configure? To answer, select the appropriate options in the answer area.

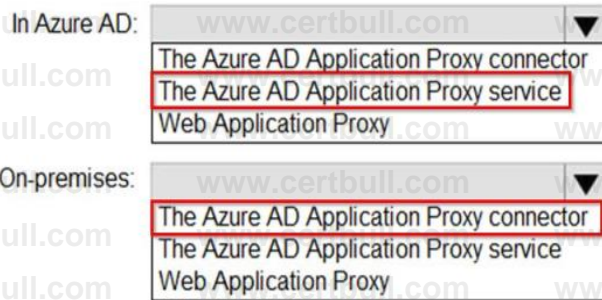
In Azure AD:

The Azure AD Application Proxy connector
The Azure AD Application Proxy service
Web Application Proxy

On-premises:

The Azure AD Application Proxy connector
The Azure AD Application Proxy service
Web Application Proxy

ANSWER:



QUESTION NO: 136

You have an Azure subscription that contains the following resources.

- An Azure Log Analytics workspace
- An Azure Automation account
- Azure Arc

You have an on-premises server named Server1 that is onboarded to Azure Arc.

You need to manage Microsoft updates on Server1 by using Azure Arc.

Which two actions should you perform? Each correct answer presents part of the solution.

A. From the Automation account, enable Update Management for Server1.

B. From the Virtual machines data source of the Log Analytics workspace, connect Server1.

C. On Server1, install the Azure Monitor agent.

D. Add Microsoft Sentinel to the Log Analytics workspace.

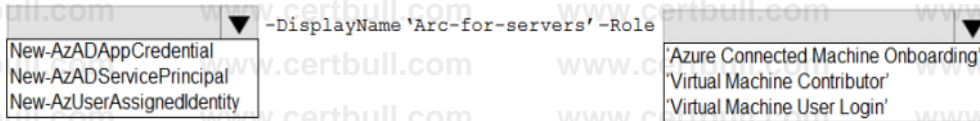
QUESTION NO: 137

You have an Azure subscription named sub1 and 500 on-premises virtual machines that run Windows Server.

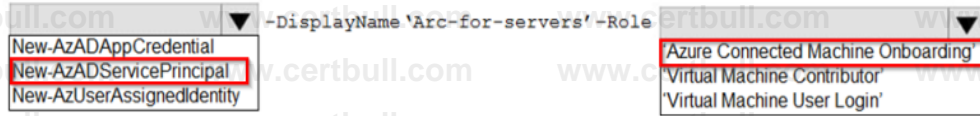
You plan to onboard the on-premises virtual machines to Azure Arc by running the Azure Arc deployment script.

You need to create an identity that will be used by the script to authenticate access to sub1. The solution must use the principle of least privilege.

How should you complete the command? To answer, select the appropriate options in the answer area.



ANSWER:



QUESTION NO: 138

Your network contains two Active Directory Domain Services (AD DS) forests named contoso.com and fabrikam.com. A two-way forest trust exists between the forests. Each forest contains a single domain.

The domains contain the servers shown in the following table.

Name	Domain	Description
Server1	contoso.com	Hosts a Windows Admin Center gateway
Server2	fabrikam.com	Hosts resources that will be managed remotely by using Windows Admin Center on Server1

You need to configure resource based constrained delegation so that the users in contoso.com can use Windows Admin Center on Server1 to connect to Server2.

How should you complete the command? To answer, select the appropriate options in the answer area.



ANSWER:



QUESTION NO: 139

You have an on premises Active Directory Domain Services (AD DS) domain that syncs with an Azure Active Directory (Azure AD) tenant. The domain contains two servers named Server1 and Server2.

A user named Admin1 is a member of the local Administrators group on Server1 and Server2.

You plan to manage Server1 and Server2 by using Azure Arc. Azure Arc objects will be added to a resource group named RG1.

You need to ensure that Admin1 can configure Server1 and Server2 to be managed by using Azure Arc.

What should you do first?

- A. From the Azure portal, generate a new onboarding script.
- B. Assign Admin1 the Azure Connected Machine Onboarding role for RG1.
- C. Hybrid Azure AD join Server1 and Server2.
- D. Create an Azure cloud-only account for Admin1.

QUESTION NO: 140

You have an Azure virtual machine named VM1 that runs Windows Server.

You have an Azure subscription that has Microsoft Defender for Cloud enabled.

You need to ensure that you can use the Azure Policy guest configuration feature to manage VM1.

What should you do?

- A. Add the PowerShell Desired State Configuration (DSC) extension to VM1.
- B. Configure VM1 to use a user-assigned managed identity.
- C. Configure VM1 to use a system-assigned managed identity.
- D. Add the Custom Script Extension to VM1.

QUESTION NO: 141

You have 10 on-premises servers that run Windows Server.

You plan to use Azure Network Adapter to connect the servers to the resources in Azure.

Which prerequisites do you require on-premises and in Azure? To answer, select the appropriate options in the answer area.

To configure the on-premises servers, use:

```
Azure CLI
Routing and Remote Access
Server Manager
Windows Admin Center
```

To connect the Azure resources and Azure Network Server Manager Adapter, use:

```
Azure Bastion
Azure Firewall
An Azure virtual network gateway
A private endpoint
A public Azure Load Balancer
```

ANSWER:

To configure the on-premises servers, use:

```
Azure CLI
Routing and Remote Access
Server Manager
Windows Admin Center
```

To connect the Azure resources and Azure Network Server Manager Adapter, use:

```
Azure Bastion
Azure Firewall
An Azure virtual network gateway
A private endpoint
A public Azure Load Balancer
```

QUESTION NO: 142

You have a server named Server1 that runs Windows Server and has the Hyper-V server role installed.

You need to limit which Hyper-V module cmdlets helpdesk users can use when administering Server1 remotely.

You configure Just Enough Administration (JEA) and successfully build the role capabilities and session configuration files.

How should you complete the PowerShell command? To answer, select the appropriate options in the answer area.

```
-Path .\HyperVJeaConfig
Enter-PSSession
New-PSSessionConfigurationFile
Register-PSSessionConfiguration
```

```
-Name 'HyperVJeaHelpDesk' -Force
.ps1
.psm1
.psrc
.pssc
```

ANSWER:

```
-Path .\HyperVJeaConfig
Enter-PSSession
New-PSSessionConfigurationFile
Register-PSSessionConfiguration
```

```
-Name 'HyperVJeaHelpDesk' -Force
.ps1
.psm1
.psrc
.pssc
```

QUESTION NO: 143

You have a server named Server1 that has Windows Admin Center installed. The certificate used by Windows Admin Center was obtained from a certification authority (CA).

The certificate expires.

You need to replace the certificate.

Which three actions should you perform in sequence? To answer, move the appropriate actions from the list of actions to the answer area and arrange them in the correct order.

Actions

- Obtain and install a new certificate.
- From Internet Information Services (IIS) Manager, bind a certificate.
- Run Windows Admin Center Setup and select Remove.
- Run Windows Admin Center Setup and select Repair.
- Run Windows Admin Center Setup and select Change.
- Copy the certificate thumbprint.

Answer Area

- Up arrow
- Down arrow

ANSWER:

- Run Windows Admin Center Setup and select Change.
- Obtain and install a new certificate.
- Copy the certificate thumbprint.

QUESTION NO: 144

You have an on-premises server named Server1 that runs Windows Server and has internet connectivity.

You have an Azure subscription.

You need to monitor Server1 by using Azure Monitor.

Which resources should you create in the subscription, and what should you install on Server1?

To answer, select the appropriate options in the answer area.

In the subscription, create:

- An Azure Files storage account
- A Log Analytics workspace
- An Azure SQL database and a data collection rule
- An Azure Blob Storage account and a data collection rule

On Server1, install:

- The Azure Monitor agent
- The Analytics gateway
- The Device Health Attestation server role

ANSWER:

In the subscription, create:

- An Azure Files storage account
- A Log Analytics workspace**
- An Azure SQL database and a data collection rule
- An Azure Blob Storage account and a data collection rule

On Server1, install:

- The Azure Monitor agent**
- The Analytics gateway
- The Device Health Attestation server role

QUESTION NO: 145

You have an Active Directory Domain Services (AD DS) domain that contains a group named Group1.

You need to create a group managed service account (gMSA) named Account1. The solution must ensure that Group1 can use Account1.

How should you complete the script? To answer, select the appropriate options in the answer area.



ANSWER:



QUESTION NO: 146

Your network contains an Active Directory Domain Services (AD DS) domain. The domain contains the resources shown in the following table.

Name	Description
CLIENT1	Client computer that runs Windows
DC1	Domain controller
Server1	File server
Server2	File server

You plan to replicate a volume from Server1 to Server2 by using Storage Replica.

You need to configure Storage Replica.

Where should you install Windows Admin Center?

- A. Server1
- B. CLIENT**
- C. DC1
- D. Server2

QUESTION NO: 147

You have an on-premises Active Directory Domain Services (AD DS) domain named contoso.com that syncs with Azure AD by using Azure AD Connect.

You enable password protection for contoso.com.

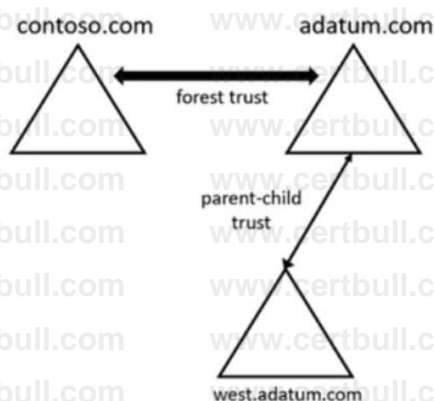
You need to prevent users from including the word contoso as part of their password.

What should you use?

- A. the Azure Active Directory admin center
- B. Active Directory Users and Computers
- C. Synchronization Service Manager
- D. Windows Admin Center**

QUESTION NO: 148

Your network contains two Active Directory Domain Services (AD DS) forests as shown in the following exhibit.



The forests contain the domain controllers shown in the following table.

Name	Domain	Global catalog	Schema master
DC1	adatum.com	Yes	Yes
DC2	adatum.com	No	No
DC3	west.adatum.com	Yes	No
DC4	contoso.com	Yes	Yes

You perform the following actions on DC1:

- Create a user named User1.
- Extend the schema with a new attribute named Attribute1.

To which domain controllers are User1 and Attribute1 replicated? To answer, select the appropriate options in the answer area.

User1:

- DC2 only
- DC3 only
- DC2 and DC3 only
- DC3 and DC4 only
- DC2, DC3, and DC4

Attribute1:

- DC2 only
- DC4 only
- DC2 and DC3 only
- DC2, DC3, and DC4

ANSWER:

User1:

- DC2 only
- DC3 only
- DC2 and DC3 only
- DC3 and DC4 only
- DC2, DC3, and DC4

Attribute1:

- DC2 only
- DC4 only
- DC2 and DC3 only
- DC2, DC3, and DC4

QUESTION NO: 149

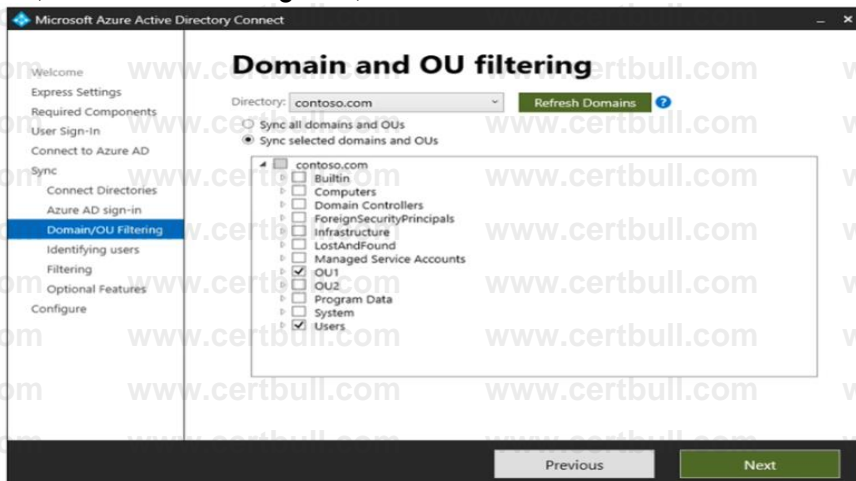
Your network contains an on-premises Active Directory Domain Services (AD DS) domain

named contoso.com that syncs with an Azure AD tenant. The tenant contains a group named

Group1 and the users shown in the following.

Name	In organizational unit (OU)
User1	OU1
User2	OU2

Domain/OU filtering in Azure AD Connect is configured as shown in the Filtering exhibit. (Click the Filtering tab.)



You review the Azure AD Connect configurations as shown in the Configure exhibit.
(Click the Configure tab.)



For each of the following statements, select Yes if the statement is true. Otherwise, select No.

Statements	Yes	No
User1 can use self-service password reset (SSPR) to reset his password.	<input type="radio"/>	<input type="radio"/>
If User1 connects to Microsoft Exchange Online, an on-premises domain controller provides authentication.	<input type="radio"/>	<input type="radio"/>
You can add User2 to Group1 as a member.	<input type="radio"/>	<input type="radio"/>

ANSWER:

Statements	Yes	No
User1 can use self-service password reset (SSPR) to reset his password.	<input checked="" type="radio"/>	<input type="radio"/>
If User1 connects to Microsoft Exchange Online, an on-premises domain controller provides authentication.	<input checked="" type="radio"/>	<input type="radio"/>
You can add User2 to Group1 as a member.	<input checked="" type="radio"/>	<input type="radio"/>

QUESTION NO: 150

Your on-premises network contains an Active Directory Domain Services (AD DS) domain.

You plan to sync the domain with an Azure AD tenant by using Azure AD Connect cloud sync.

You need to meet the following requirements:

- Install the software required to sync the domain and Azure AD.
- Enable password hash synchronization.

What should you install, and what should you use to enable password hash synchronization? To answer, select the appropriate options in the answer area.

Install:

- Active Directory Administrative Center
- Azure AD Connect
- The AD FS Management console
- The Azure AD Connect provisioning agent

Use:

- Active Directory Administrative Center
- Azure AD Connect
- The AD FS Management console
- The Azure portal

ANSWER:

Install:

- Active Directory Administrative Center
- Azure AD Connect**
- The AD FS Management console
- The Azure AD Connect provisioning agent

Use:

- Active Directory Administrative Center
- Azure AD Connect
- The AD FS Management console
- The Azure portal**

QUESTION NO: 151

Your on-premises network contains an Active Directory domain named contoso.com. You have an Azure AD tenant.

You plan to sync contoso.com with the Azure AD tenant by using Azure AD Connect cloud sync.

You need to create an account that will be used by Azure AD Connect cloud sync.

Which type of account should you create?

- A. system-assigned managed identity
- B. group managed service account (gMSA)**
- C. user
- D. InetOrgPerson

QUESTION NO: 152

Your network contains an Active Directory Domain Services (AD DS) domain. The domain contains the domain controllers shown in the following table.

Name	Description
DC1	PDC emulator, RID master, and global catalog server
DC2	Infrastructure master and domain naming master
DC3	Schema master
RODC1	Read-only domain controller (RODC)

You need to ensure that if an attacker compromises the computer account of RODC1, the attacker cannot view the Employee-Number AD DS attribute. Which partition should you modify?

- A. configuration
- B. global catalog
- C. domain
- D. schema

QUESTION NO: 153

Your network contains an Active Directory Domain Services (AD DS) domain. The domain contains the domain controllers shown in the following table.

Name	Description
DC1	Has the schema master, infrastructure master, and domain naming master roles
DC2	Has the PDC emulator and RID master roles and is a global catalog server
DC3	None

You need to configure DC3 to be the authoritative time server for the domain.

Which operations master role should you transfer to DC3, and which console should you use? To answer, select the appropriate options in the answer area.

Role:

- Domain naming master
- Infrastructure master
- PDC emulator
- RID master
- Schema master

Console:

- Active Directory Administrative Center
- Active Directory Domains and Trusts
- Active Directory Sites and Services
- Active Directory Users and Computers

ANSWER:

Role:

- Domain naming master
- Infrastructure master
- PDC emulator
- RID master
- Schema master

Console:

- Active Directory Administrative Center
- Active Directory Domains and Trusts
- Active Directory Sites and Services
- Active Directory Users and Computers

QUESTION NO: 154

Your network contains an Active Directory domain named contoso.com. The domain contains group managed service accounts (gMSAs). You have a server named Server1 that runs Windows Server and is in a workgroup. Server1 hosts Windows containers.

You need to ensure that the Windows containers can authenticate to contoso.com.

Which three actions should you perform in sequence? To answer, move the appropriate actions from the list of actions to the answer area and arrange them in the correct order.

On Server1, install and run ccg.exe.

On Server1, run New-Credentialspec. 1

In contoso.com, generate a Key Distribution Service (KDS) root key. 2

In contoso.com, create a gMSA and a standard user account. 3

From a domain-joined computer, create a credential spec file and copy the file to Server1.

ANSWER:

1 In contoso.com, generate a Key Distribution Service (KDS) root key.

2 On Server1, run New-Credentialspec.

3 On Server1, install and run ccg.exe.

QUESTION NO: 155

Your network contains an Active Directory Domain Services (AD DS) forest named contoso.com. The forest contains a child named east.contoso.com and the servers shown in the following table.

Name	Domain	Description
DC1	contoso.com	Has the schema master, infrastructure master, and domain naming master roles
DC2	east.contoso.com	Has the PDC emulator and RID master roles and is a global catalog server
Server1	contoso.com	Has the File Server, DFS Namespaces, and DFS Replication server roles

You need to create a folder for the Central Store to manage Group Policy template files for the entire forest.

What should you name the folder, and on which server should you create the folder? To answer, select the appropriate options in the answer area.

Name:

Server:

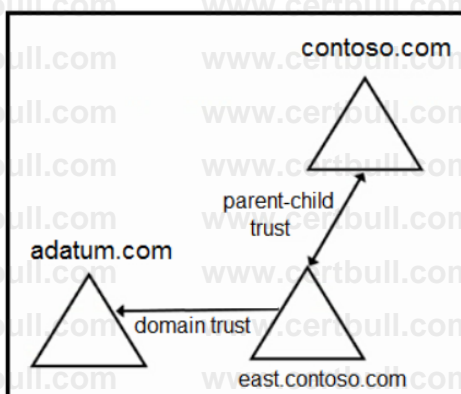
ANSWER:

Name:

Server:

QUESTION NO: 156

Your network contains two Active Directory forests and a domain trust as shown in the following exhibit.



The domain trust has the following configurations:

- Name: adatum.com
- Type: External
- Direction: One-way, outgoing
- Outgoing trust authentication level: Domain-wide authentication

The forests contain the users shown in the following table.

Name	Domain
User1	adatum.com
User2	contoso.com
User3	east.contoso.com

The forests contain the network shares shown in the following table.

Name	In domain
Share1	adatum.com
Share2	contoso.com
Share3	east.contoso.com

For each of the following statements, select Yes if the statement is true. Otherwise, select No.

Statements	Yes	No
User1 can be assigned permissions for Share3.	<input type="radio"/>	<input type="radio"/>
User2 can be assigned permissions for Share1.	<input type="radio"/>	<input type="radio"/>
User3 can be assigned permissions for Share1.	<input type="radio"/>	<input type="radio"/>

ANSWER:

Statements	Yes	No
User1 can be assigned permissions for Share3.	<input checked="" type="radio"/>	<input type="radio"/>
User2 can be assigned permissions for Share1.	<input type="radio"/>	<input checked="" type="radio"/>
User3 can be assigned permissions for Share1.	<input type="radio"/>	<input checked="" type="radio"/>

QUESTION NO: 157

Your network contains two Active Directory Domain Services (AD DS) forests named contoso.com and fabrikam.com. Contoso.com contains three child domains named amer.contoso.com, apac.contoso.com, and emea.contoso.com.

Fabrikam.com contains a child domain named apac.fabrikam.com. A bidirectional forest trust exists between contoso.com and fabrikam.com. You need to provide users in the contoso.com forest with access to the resources in the fabrikam.com forest. The solution must meet the following requirements:

- Users in contoso.com must only be added directly to groups in the contoso.com forest.
- Permissions to access the resources in fabrikam.com must only be granted directly to groups in the fabrikam.com forest.
- The number of groups must be minimized.

Which type of groups should you use to organize the users and to assign permissions? To answer, drag the appropriate group types to the correct

requirements. Each group may be used once, more than once, or not at all. You may need to drag the split bar between panes or scroll to view content.

Group types

Domain global	Organize users:	
Domain local	Assign permissions:	
Universal		

ANSWER:

Organize users:	Domain global
Assign permissions:	Domain local

QUESTION NO: 158

You plan to store a DNS zone in a custom Active Directory partition.

You need to create the Active Directory partition for the zone. The partition must replicate to only four of the domain controllers.

You plan to store a DNS zone in a custom Active Directory partition.

You need to create the Active Directory partition for the zone. The partition must replicate to only four of the domain controllers.

What should you use?

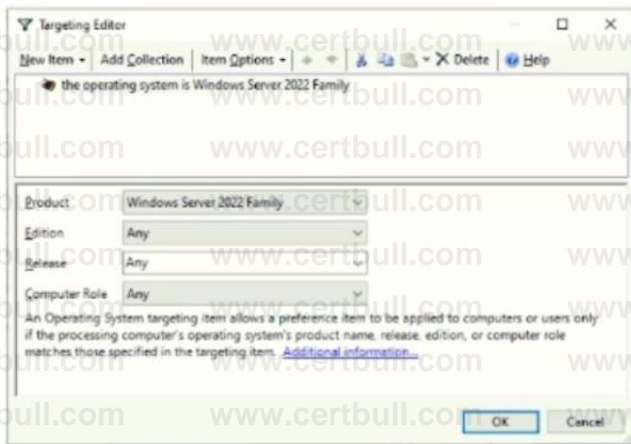
- A. Windows Admin Center
- B. DNS Manager
- C. Active Directory Sites and Services
- D. ntdsutil.exe**

QUESTION NO: 159

Your network contains an Active Directory domain named contoso.com. The domain contains the computers shown in the following table.

Name	Operating system
Computer1	Windows 11
Server1	Windows Server 2016
Server2	Windows Server 2019
Server3	Windows Server 2022

On Server3, you create a Group Policy Object (GPO) named GP01 and link GP01 to contoso.com. GP01 includes a shortcut preference named Shortcut1 that has item-level targeting configured as shown in the following exhibit.



To which computer will Shortcut1 be applied?

- A. Server3 only
- B. Computer1 and Server3 only
- C. Server2 and Server3 only
- D. Server1, Server2, and Server3 only

QUESTION NO: 160

Your network contains a single domain Active Directory Domain Services (AD DS) forest named contoso.com. The forest contains a single Active Directory site.

You plan to deploy a read only domain controller (RODC) to a new datacenter on a server named Server1. A user named User1 is a member of the local Administrators group on Server1.

You need to recommend a deployment plan that meets the following requirements:

- Ensures that a user named User1 can perform the RODC installation on Server1
- Ensures that Server1 is in a new site named RemoteSite1
- Uses the principle of least privilege

Which three actions should you recommend performing in sequence? To answer, move the appropriate actions from the list of actions to the answer area and arrange them in the correct order.

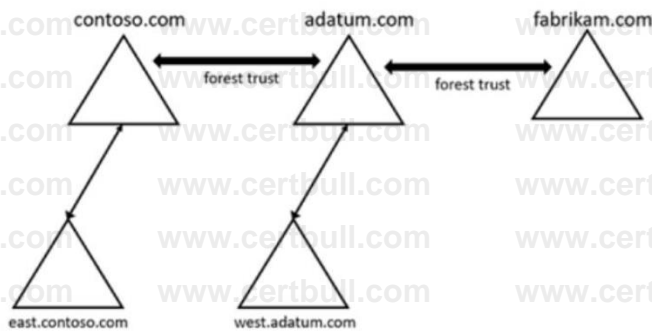
Actions	Answer Area
Instruct User1 to run the Active Directory Domain Services installation Wizard on Server1.	
Create a site and a subnet.	
Create a site link.	<div style="display: flex; justify-content: center; align-items: center; gap: 10px;"> ➤ ➤ </div>
Pre-create an RODC account.	
Add User1 to the Contoso\Administrators group.	

ANSWER:

- Pre-create an RODC account.
- Create a site and a subnet.
- Instruct User1 to run the Active Directory Domain Services installation Wizard on Server1.

QUESTION NO: 161

Your network contains three Active Directory Domain Services (AD DS) forests as shown in the following exhibit.



The network contains the users shown in the following table.

Name	Domain
User1	east.contoso.com
User2	fabrikam.com

The network contains the security groups shown in the following table.

Name	Type	Domain
Group1	Domain local	west.adatum.com
Group2	Universal	contoso.com
Group3	Universal	east.contoso.com

For each of the following statements, select Yes if the statement is true. Otherwise, select No.

Answer Area

Statements

You can add User1 to Group1.

You can add User2 to Group3.

You can grant Group2 permissions to the resources in the fabrikam.com domain.

Yes

No

ANSWER:

Statements

You can add User1 to Group1.

You can add User2 to Group3.

You can grant Group2 permissions to the resources in the fabrikam.com domain.

Yes

No

QUESTION NO: 162

Your network contains an Active Directory Domain Services (AD DS) forest. The forest contains three Active Directory sites named Site1, Site2, and Site3. Each site contains two domain controllers. The sites are connected by using DEFAULTSITELINK.

You open a new branch office that contains only client computers.

You need to ensure that the client computers in the new office are primarily authenticated by the domain controllers in Site1.

Solution: You configure the Try Next Closest Site Group Policy Object (GPO) setting in a GPO that is linked to Site1.

Does this meet the goal?

A. Yes

B. No

QUESTION NO: 163

Your network contains a single-domain Active Directory Domain Services (AD DS) forest named contoso.com. The forest contains the servers shown in the following exhibit table.

Name	Description
DC1	Domain controller
Server1	Member server

You plan to install a line-of-business (LOB) application on Server1. The application will install a custom Windows service.

A new corporate security policy states that all custom Windows services must run under the context of a group managed service account (gMSA). You deploy a root key.

You need to create, configure, and install the gMSA that will be used by the new application.

Which two actions should you perform? Each correct answer presents part of the solution.

- A. On Server1, run the setspn command.
- B. On DC1, run the New-ADServiceAccount cmdlet.**
- C. On Server1, run the Install-ADServiceAccount cmdlet.
- D. On Server1, run the Get-ADServiceAccount cmdlet.
- E. On DC1, run the Set-ADComputer cmdlet.**
- F. On DC1, run the Install-ADServiceAccount cmdlet.

QUESTION NO: 164

Your network contains an Active Directory Domain Services (AD DS) forest. The forest contains three Active Directory sites named Site1, Site2, and Site3. Each site contains two domain controllers. The sites are connected by using DEFAULTSITELINK.

You open a new branch office that contains only client computers. You need to ensure that the client computers in the new office are primarily authenticated by the domain controllers in Site1.

Solution: You create an organization unit (OU) that contains the client computers in the branch office. You configure the Try Next Closest Site Group Policy Object (GPO) setting in a GPO that is linked to the new OU.

Does this meet the goal?

- A. Yes
- B. No**

